



MONOBLOCK DBB VALVES

sami-instruments.com



In the sign
of evolution
and safety

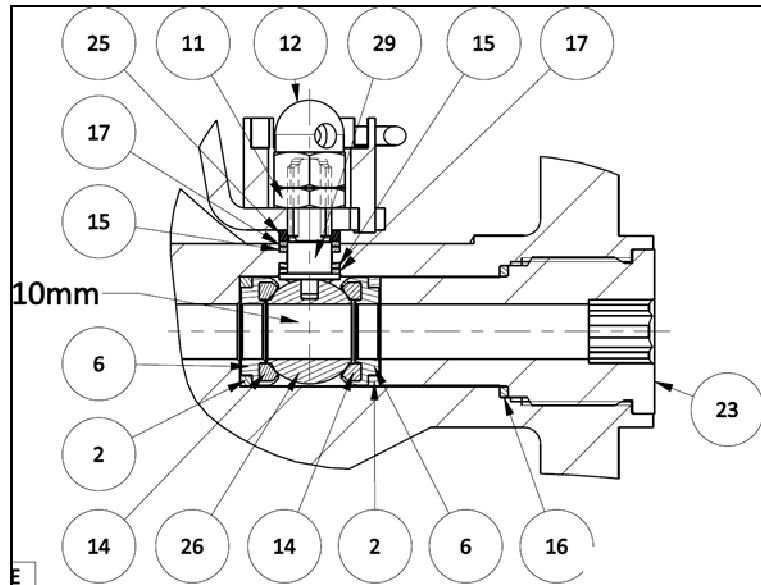


SAMI instruments srl
via Botte, 8
35011 Reschigliano
di Campodarsego • PD • Italy

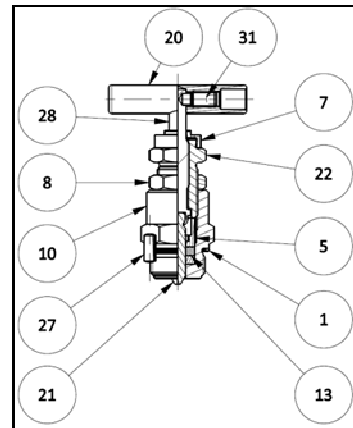
tel. +39 049 9201939
fax +39 049 9217549
info@sami-instruments.com
www.sami-instruments.com



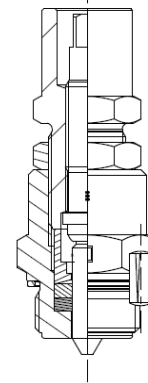
Ball bore size 10 mm



Bleeder



Antitamper (optional)



NO	DESCRIPTION	MATERIAL	QTY
1	Seal ring 5.5	AISI 316L	1
2	Ring cap rear - PTFE	PTFE	4
3	Valve body FLG/FLG	ASTM A105N	1
4	Locking device	AISI 303	2
5	Seal bush 5.5 GRAPHOIL	AISI 316L	1
6	Seat base	AISI 316L	4
7	VENT Cap	Hytrel RED	1
8	Lock nut	AISI 316L	1
9	Handle cover SAMI	Vinile colore RAL 5012	2
10	Body Bonnet 5.5 STD	C50	1
11	Hexagonal nut M8 UNI EN 24035 A4	A4 - AISI 316L	2
12	EXAGONAL NUT UNI 5721 M8	A4	2
13	Bonnet seal - Graphoil	GRAPHOIL	2
14	Seat	PTFE	4
15	Graphoil gasket	GRAPHOIL d.1.75	4
16	Metal seal ring	AISI 316L	2
17	PTFE gasket	PTFE	4
18	Padlock Viro 551.24.0.69		2
19	Handle H=45mm	A350 LF2	2
20	Handle bar STD.	AISI 303	1
21	Plug 5.5 STD	AISI 316L	1
22	Gland Nut 5.5 STD	C50	1
23	Fastening fitting	A350 LF2	2
24	RIVET UNI 7346 2.5X6.5	C15	2
25	Stem pack press washer	AISI 316L	2
26	Ball bore 10mm	AISI 316L	2
27	PIN UNI 1474-S4 4X10	A2	3
28	Bonnet 5.5 stem STD	AISI 316L	1
29	Ball stem	AISI 316L	2
30	Plate features	AISI 316L	1
31	SCREW STEI UNI 5925 M6X12	A4	1

Non-rotating Metal Stem Tip

A non rotating stem tip is typically used in high cycle applications to extend the service life of the valve. Its purpose is to prevent galling of the valve seat in contact with the non-rotating stem, which is driven straight into it without rotating.

- Tee bar easy manoeuvrability with minimum effort
- PTFE packing standard, optional graphoil
- Anti-static device
- Stainless steel construction as standard, optional: carbon steel LF2, Duplex, Super Duplex, Monel 400, Hastelloy C276, Inconel 625, Titanium, Incolloy 825
- Colour coded functional identification
- Externally adjustable gland
- Variety of end connections
- Standard Drain/Vent connection: 1/2 " NPT-F
- Dust cap to prevent contaminations on the operating thread

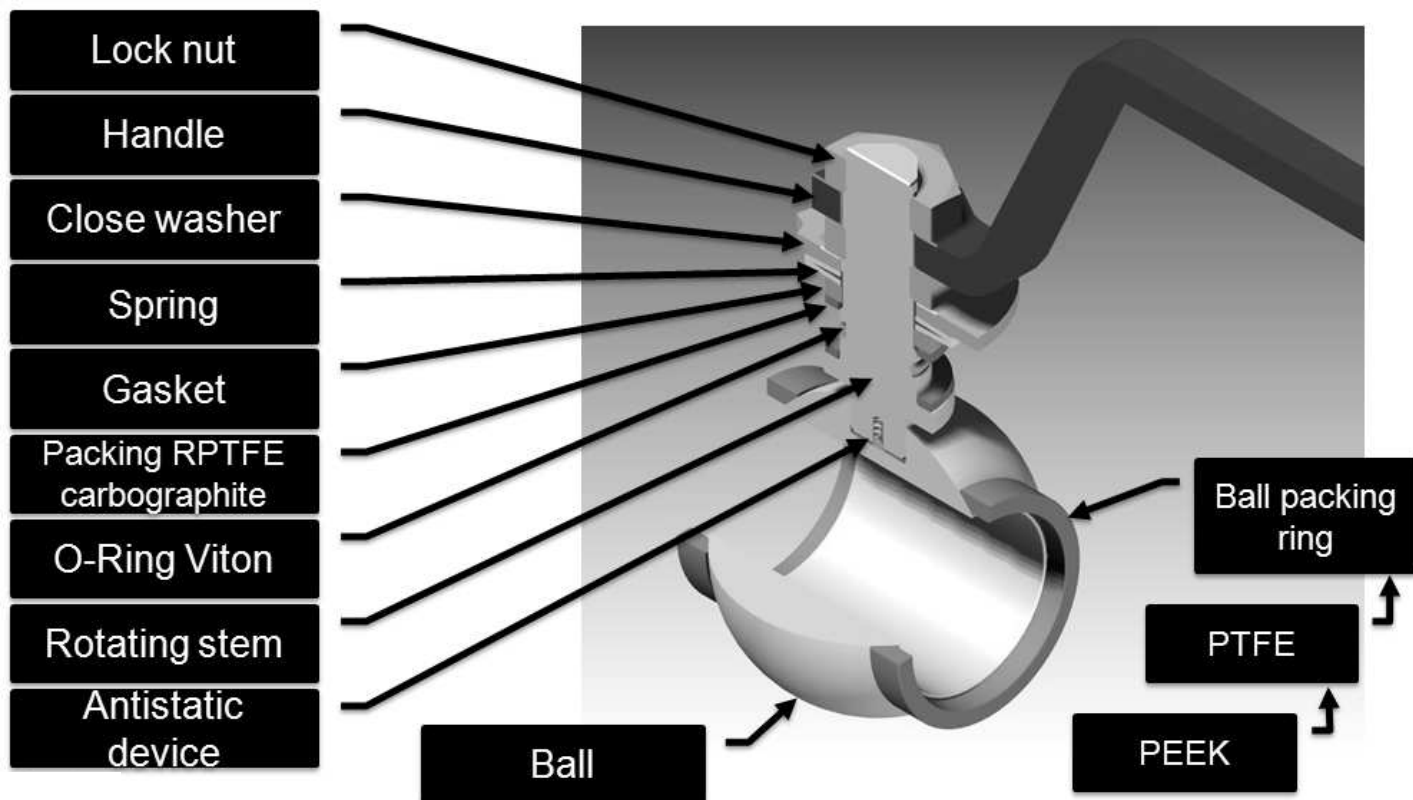


SAMI instruments srl
via Botte, 8
35011 Reschigliano
di Campodarsego • PD • Italy

tel. +39 049 9201939
fax +39 049 9217549
info@sami-instruments.com
www.sami-instruments.com



Ball Valve



Features

- AISI 316 handle and stop pin as standard for corrosion resistance
- Blowout proof one-piece stem spindle
- Fully encapsuled ball seats
- Super finished ball for low operating torque and long life
- 10 mm or 20 mm bore
- Firesafe to BS 6755 PART. 2
- Pressure rating up to 6.000 psi (413 bar)

Standard Ball Packing for 10 mm bore size:

- From rating 150 to 600 lbs included: PTFE Carbographe. Temperature range: -54°C +260°C
- From rating 900 to rating 2500 lbs included: PEEK. Temperature range: -40°C +260°C.
- Other packing materials are available on demand.



SAMI instruments srl
 via Botte, 8
 35011 Reschigliano
 di Campodarsego • PD • Italy

tel. +39 049 9201939
 fax +39 049 9217549
 info@sami-instruments.com
 www.sami-instruments.com



Standards applicable to our Monoblock DBB valves

API 6D	Specification for Pipeline Valves (Gate, Plug, Ball and Check Valves)
API 6A	Specification for Wellhead and Christmas Tree Equipment
ASME B16.34	Steel Valves - Flanged & Buttwelding Ends
ASME B16.10	Face-to-Face Dimensions of Ferrous Valves
API 598	Valve Inspection & Testing
EN ISO 10497 Ed. 2010 API 607 Ed. 2010	Firesafe

Flange sizes of Sami DBB comply with ASME and API standards

API - ISO 10423

Size (in)	Class	Range / Flange	Flange hole / Forstner	Prigioniero	Rised face
2 1/2" - 52	150 LB	150,2 168,1 174,8 20,4	188	20	127,0 1/2"
3 1/2" - 68		174,8 192,7 199,4 25,4	192	24	146,3 3/4"
4 1/2" - 84		199,4 217,3 224,0 25,4	216	24	165,1 5/8"
5 1/2" - 100		224,0 241,9 248,6 25,4	232	24	183,9 3/4"
6 1/2" - 116		248,6 266,5 273,2 25,4	260	24	202,7 7/8"
7 1/2" - 132		273,2 291,1 297,8 25,4	288	24	221,5 1"
8 1/2" - 148		297,8 315,7 322,4 25,4	316	24	240,3 1 1/8"
9 1/2" - 164		322,4 340,3 347,0 25,4	344	24	259,1 1 1/4"
10 1/2" - 180		347,0 364,9 371,6 25,4	372	24	277,9 1 1/2"
11 1/2" - 196		371,6 389,5 396,2 25,4	396	24	296,7 1 5/8"
12 1/2" - 212		396,2 413,1 419,8 25,4	420	24	315,5 1 3/4"
13 1/2" - 228		419,8 436,7 443,4 25,4	444	24	334,3 1 7/8"

ANSI B16.5

Size (in)	Class	Range / Flange	Flange hole / Forstner	Prigioniero	Rised face
2 1/2" - 52	150 LB	150,2 168,1 174,8 20,4	188	20	127,0 1/2"
3 1/2" - 68		174,8 192,7 199,4 25,4	192	24	146,3 3/4"
4 1/2" - 84		199,4 217,3 224,0 25,4	216	24	165,1 5/8"
5 1/2" - 100		224,0 241,9 248,6 25,4	232	24	183,9 3/4"
6 1/2" - 116		248,6 266,5 273,2 25,4	260	24	202,7 7/8"
7 1/2" - 132		273,2 291,1 297,8 25,4	288	24	221,5 1"
8 1/2" - 148		297,8 315,7 322,4 25,4	316	24	240,3 1 1/8"
9 1/2" - 164		322,4 340,3 347,0 25,4	344	24	259,1 1 1/4"
10 1/2" - 180		347,0 364,9 371,6 25,4	372	24	277,9 1 1/2"
11 1/2" - 196		371,6 389,5 396,2 25,4	396	24	296,7 1 5/8"
12 1/2" - 212		396,2 413,1 419,8 25,4	420	24	315,5 1 3/4"
13 1/2" - 228		419,8 436,7 443,4 25,4	444	24	334,3 1 7/8"

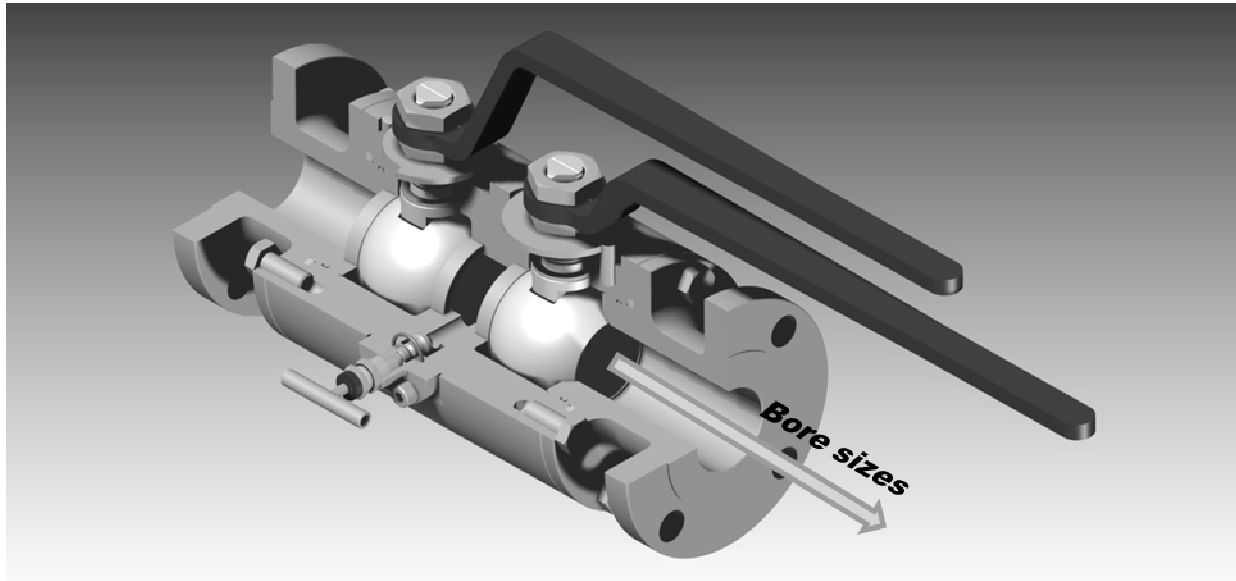
Size	DN	Class	Flange / Flangia			Risalto	Flange holes			Prigioniero	Rised face		
			D (mm)	b ₁ (mm)	b ₂ (mm)		g (mm)	Numero	l (mm)			k (mm)	
2 1/2"	15	150 LB	±1,6	+3,2	+3,2	±0,8 [Rf=1,6]	4	15,9	±0,8	1/2"	1,6		
3 1/2"	20		89,9	11,1	-0	42,9							
4 1/2"	25		98,4	12,7	-0	50,8							
5 1/2"	32		107,9	14,3	-0	63,5							
6 1/2"	40		117,5	15,9	-0	73,0							
7 1/2"	50		127,0	17,5	-0	92,1							
8 1/2"	100		152,4	19,05	-0	19,05						120,6	5/8"



SAMI instruments srl
via Botte, 8
35011 Reschigliano
di Campodarsego • PD • Italy

tel. +39 049 9201939
fax +39 049 9217549
info@sami-instruments.com
www.sami-instruments.com





Nominal size		Full Bore	Reduced Bore	ANSI Rating
DN 15	1/2"	13	10	150÷2500 Lbs
DN 20	3/4"	19	13	150÷2500 Lbs
DN 25	1"	25	19	150÷2500 Lbs
DN 40	1 1/2"	38	25	150÷2500 Lbs
DN 50	2"	49	38	150÷1500 Lbs
	2"	42		2500 Lbs
DN 75	3"	not in production	49	150÷1500 Lbs
	3"		42	2500 Lbs

FULL BORE

The diameter of the ball bore is equal to the diameter of the flange bore.

REDUCED BORE

The diameter of the ball bore is REDUCED compared to the one of the flanged bore.

Example

A 2" Full Bore valve has a bore size of 49 mm

A 2" Reduced Bore valve has a bore size of 38 mm

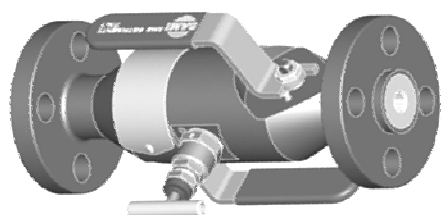


SAMI instruments srl
via Botte, 8
35011 Reschigliano
di Campodarsego • PD • Italy

tel. +39 049 9201939
fax +39 049 9217549
info@sami-instruments.com
www.sami-instruments.com

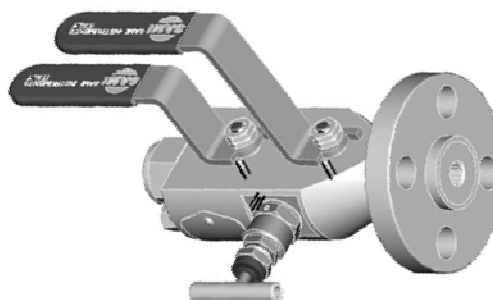


Our instrumentation DBB range (10 mm bore size):



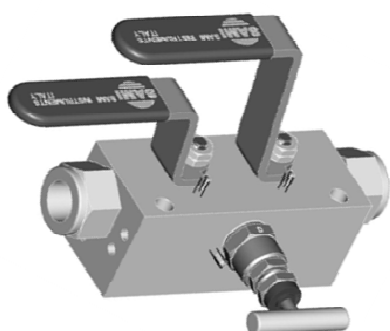
Flanged/Flanged

Our series: BB



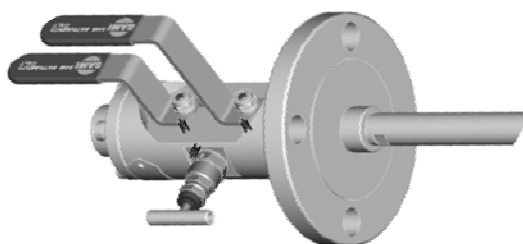
Flanged/Threaded

Our series: BA



Threaded/Threaded

Our series: BC



Injection and Sampling

Our series: JA and SF



SAMI instruments srl
via Botte, 8
35011 Reschigliano
di Campodarsego • PD • Italy

tel. +39 049 9201939
fax +39 049 9217549
info@sami-instruments.com
www.sami-instruments.com





Instrumentation DBB

Ordering Information - Instrumentation DBB Valves

Model	Style	Valve Configuration	Pressure Rating	Inlet Size	End Type	Out Size	Material	Options
BA	1	A	1	A	B	2	A	A

Style	
1	Block - Bleed - Block
3	Block - Block - Bleed
5	Block - Bleed
7	Block - Block
9	Block

Inlet Size	
A	1/2"
B	3/4"
C	1"
D	1 1/2"
E	2"
F	3"
G	1 13/16"

Out Size	
1	1/4"
2	1/2"
3	3/4"
4	1"
5	Flanged = IN
6	IEC 61518/A
7	Graylock

Material	
A	Aisi 316L
C	Aisi 316 Ti
D	Monel 400
E	Duplex F51
G	Super Duplex F55
H	HASTELLOY C276
I	INCONEL 625
J	INCOLLOY 825
L	TITANIUM
M	A350-LF2
Q	ASTM B148

Valve configuration	
A	BALL, NEEDLE, BALL
B	BALL, NEEDLE, NEEDLE
C	BALL, BALL, NEEDLE
E	BALL, NEEDLE
F	BALL, BALL
I	NEEDLE, NEEDLE, NEEDLE
O	BALL
R	BALL, BALL, BALL

Pressure Rating	
1	150 lbs
2	300 lbs
3	600 lbs
4	900 lbs
5	1500 lbs
6	2500 lbs
7	6,000 psi
8	10,000 psi
A	API 5.000
B	API 10.000
C	API 15.000

End Type	
A	RF Stock Finish
B	RF Smooth Finish
C	RF Concentring
D	RF Spiral
E	RTJ Ring Joint
F	FF Stock Finish
G	FF Smooth Finish
H	FF Concentric
I	FF Spiral
J	NPT-F
L	BSP
M	BSPT
N	S.W.
O	B.W.

Options	
A	Drain / Vent 1/4"
B	Drain / Vent 3/4"
C	Locking Device
D	Drain/Vent Anti-Tamper
E	BSPP Thread - Out
F	BSPT Thread - Out
G	Standard Painting
H	Ball Packing - Peek
I	Ball Packing - Devlon
Q	Male/Female Thread
R	Female/Male Thread
S	Male/Male Thread

Model	
BA	DBB Flanged/Threaded - Ball Bore 10 mm
BB	DBB Flanged/Flanged - Ball Bore 10 mm
BC	DBB Threaded/Threaded - Ball Bore 10 mm



SAMI instruments srl
 via Botte, 8
 35011 Reschigliano
 di Campodarsego • PD • Italy

tel. +39 049 9201939
 fax +39 049 9217549
 info@sami-instruments.com
 www.sami-instruments.com

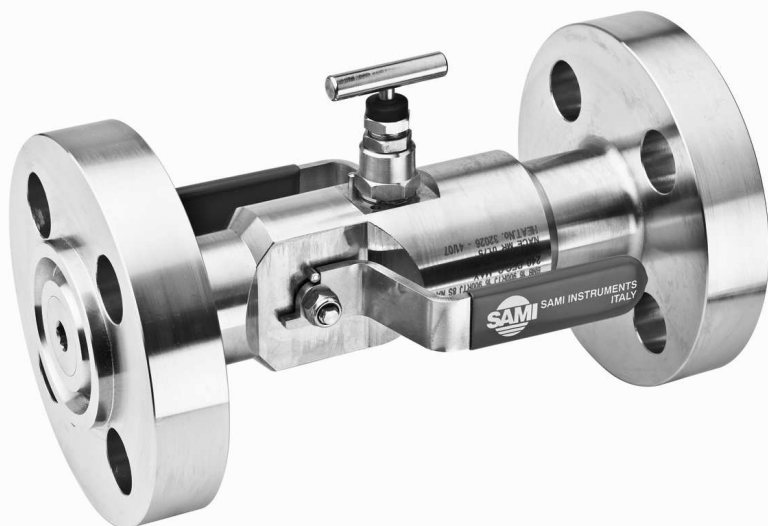


Sami Instruments monoblock valves provide a smooth transition from process to instrumentation systems in a single, compact assembly. Benefits include fewer leak points and reduced size and weight compared to traditional systems.



Features

- Process interface in one compact ball/needle/ball valve assembly
- One piece forged body
- Available configurations: compact block, block and bleed and double block and bleed
- Flange connections in compliance with ASME B16.5 RF and RTJ; NPT connections in compliance with ASME B1.20.1
- Anti-blowout valve stems and needles
- Ratings from 150 up to 2500 lbs
- Stainless steel handle standard with full grip PVC sleeve
- Stop pin
- One-piece stem spindle
- Finished ball for low operating torque and long life
- Vibration resistant gland nut
- Externally adjustable gland
- Bore size 10 mm

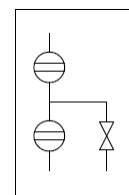
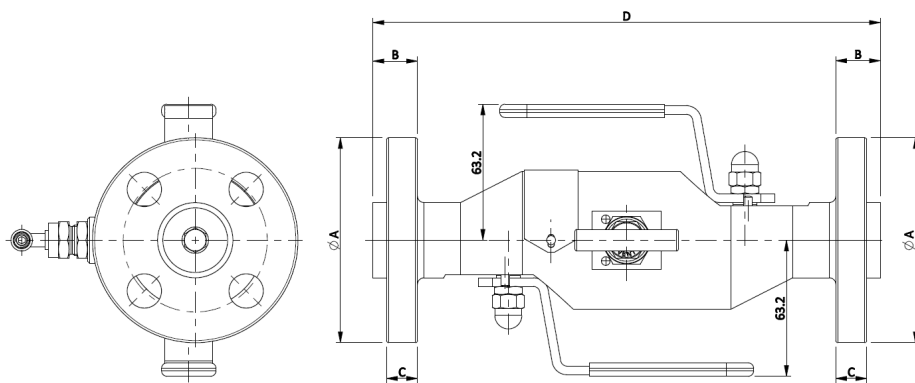


SAMI instruments srl
via Botte, 8
35011 Reschigliano
di Campodarsego • PD • Italy

tel. +39 049 9201939
fax +39 049 9217549
info@sami-instruments.com
www.sami-instruments.com



Flanged / Flanged



PART NUMBER	FEATURES					
	RATING		A	B	C	D
BB1A1AB5A	1/2"	150	88.9	11.1	9.5	235
BB1A1BB5A	3/4"	150	98.4	12.7	11.1	235
BB1A1CB5A	1"	150	107.9	14.3	12.7	235
BB1A1DB5A	1-1/2"	150	127	17.5	15.9	235
BB1A1EB5A	2"	150	152.4	19.05	17.45	254
BB1A2AB5A	1/2"	300	95.2	14.3	12.7	235
BB1A2BB5A	3/4"	300	117.5	15.9	14.3	235
BB1A2CB5A	1"	300	123.8	17.5	15.9	235
BB1A2DB5A	1-1/2"	300	155.6	20.6	19	254
BB1A2EB5A	2"	300	165.1	22.2	20.6	254
BB1A3AB5A	1/2"	600	95.2	20.6	14.3	235
BB1A3BB5A	3/4"	600	117.5	22.2	15.9	235
BB1A3CB5A	1"	600	123.8	23.8	17.5	254
BB1A3DB5A	1-1/2"	600	155.6	28.5	22.2	254
BB1A3EB5A	2"	600	165.1	31.7	25.4	267

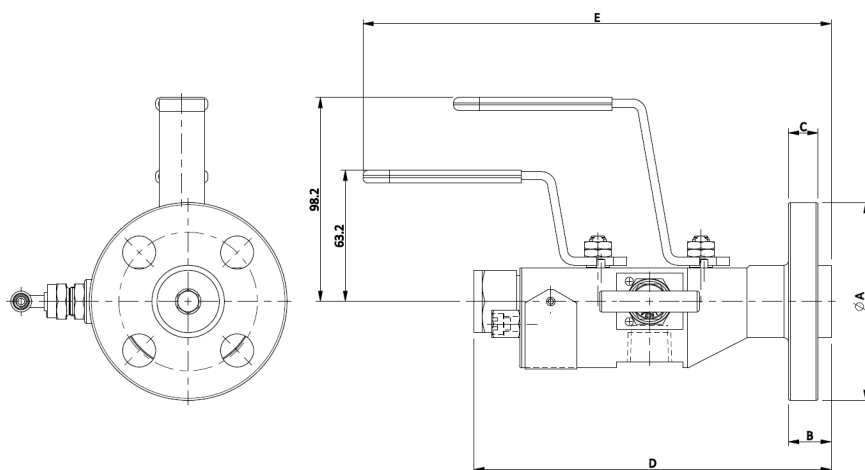
PART NUMBER	FEATURES					
	RATING	RATING	A	B	C	D
BB1A4AB5A	1/2"	900	120.6	28.5	22.2	254
BB1A4BB5A	3/4"	900	130.2	31.7	25.4	254
BB1A4CB5A	1"	900	149.2	34.9	28.6	267
BB1A4DB5A	1-1/2"	900	177.8	38	31.7	267
BB1A4EB5A	2"	900	215.9	44.4	38.1	314
BB1A5AB5A	1/2"	1500	120.6	28.5	22.2	254
BB1A5BB5A	3/4"	1500	130.2	31.7	25.4	254
BB1A5CB5A	1"	1500	149.2	34.9	28.6	367
BB1A5DB5A	1-1/2"	1500	177.8	38	31.7	267
BB1A5EB5A	2"	1500	215.9	44.4	38.1	314
BB1A6AB5A	1/2"	2500	133.35	36.5	30.2	267
BB1A6BB5A	3/4"	2500	139.7	38	31.7	267
BB1A6CB5A	1"	2500	158.75	41.2	34.9	267
BB1A6DB5A	1-1/2"	2500	203.2	50.7	44.4	314
BB1A6EB5A	2"	2500	234.95	57.1	50.8	334



SAMI instruments srl
 via Botte, 8
 35011 Reschigliano
 di Campodarsego • PD • Italy

tel. +39 049 9201939
 fax +39 049 9217549
 info@sami-instruments.com
 www.sami-instruments.com





PART NUMBER	FEATURES						
	RATING	A	B	C	D	E	
BA1A1AB2A	1/2"	150	88.9	11.1	9.5	172	225.4
BA1A1BB2A	3/4"	150	98.4	12.7	11.1	172	225.4
BA1A1CB2A	1"	150	107.9	14.3	12.7	172	225.4
BA1A1DB2A	1-1/2"	150	127	17.5	15.9	172	225.4
BA1A1EB2A	2"	150	152.4	19.05	17.45	182	235.4
BA1A2AB2A	1/2"	300	95.2	14.3	12.7	172	225.4
BA1A2BB2A	3/4"	300	117.5	15.9	14.3	172	225.4
BA1A2CB2A	1"	300	123.8	17.5	15.9	172	225.4
BA1A2DB2A	1-1/2"	300	155.6	20.6	19	182	235.4
BA1A2EB2A	2"	300	165.1	22.2	20.6	182	235.4
BA1A3AB2A	1/2"	600	95.2	20.6	14.3	172	225.4
BA1A3BB2A	3/4"	600	117.5	22.2	15.9	172	225.4
BA1A3CB2A	1"	600	123.8	23.8	17.5	172	225.4
BA1A3DB2A	1-1/2"	600	155.6	28.5	22.2	182	235.4
BA1A3EB2A	2"	600	165.1	31.7	25.4	182	235.4

PART NUMBER	FEATURES						
	RATING	RATING	A	B	C	D	E
BA1A4AB2A	1/2"	900	120.6	28.5	22.2	182	235.4
BA1A4BB2A	3/4"	900	130.2	31.7	25.4	182	235.4
BA1A4CB2A	1"	900	149.2	34.9	28.6	192	245.4
BA1A4DB2A	1-1/2"	900	177.8	38	31.7	204	257.4
BA1A4EB2A	2"	900	215.9	44.4	38.1	222	275.4
BA1A5AB2A	1/2"	1500	120.6	28.5	22.2	182	235.4
BA1A5BB2A	3/4"	1500	130.2	31.7	25.4	182	235.4
BA1A5CB2A	1"	1500	149.2	34.9	28.6	192	245.4
BA1A5DB2A	1-1/2"	1500	177.8	38	31.7	204	257.4
BA1A5EB2A	2"	1500	215.9	44.4	38.1	222	275.4
BA1A6AB2A	1/2"	2500	133.35	36.5	30.2	192	245.4
BA1A6BB2A	3/4"	2500	139.7	38	31.7	192	245.4
BA1A6CB2A	1"	2500	158.75	41.2	34.9	192	245.4
BA1A6DB2A	1-1/2"	2500	203.2	50.7	44.4	222	275.4
BA1A6EB2A	2"	2500	234.95	57.1	50.8	222	275.4



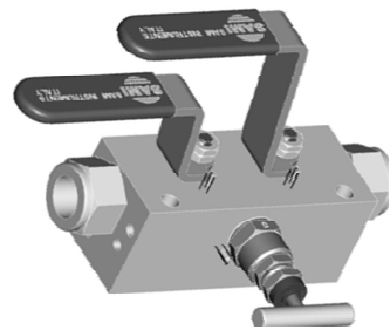
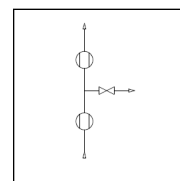
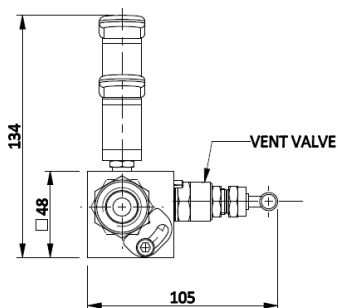
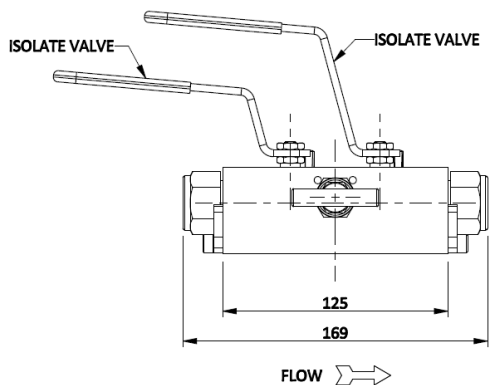
SAMI instruments srl
 via Botte, 8
 35011 Reschigliano
 di Campodarsego • PD • Italy

tel. +39 049 9201939
 fax +39 049 9217549
 info@sami-instruments.com
 www.sami-instruments.com

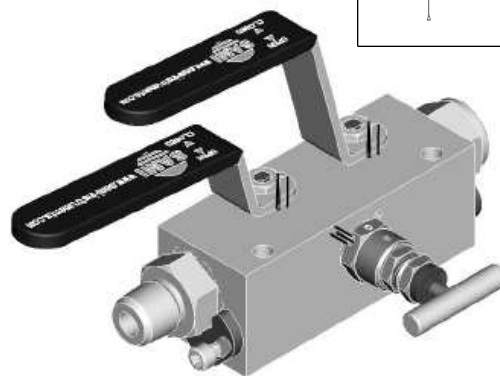
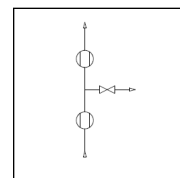
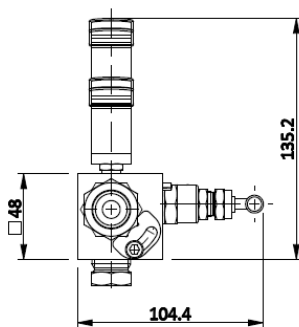
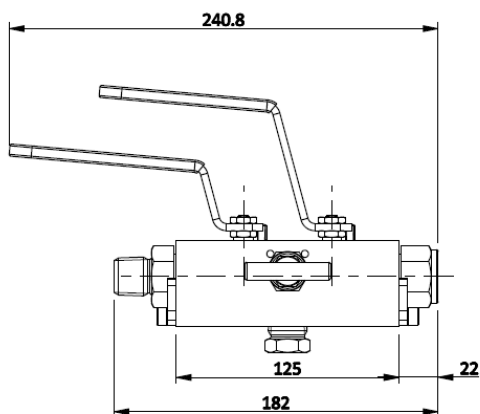


Threaded / Threaded

Female/Female version



Male/Female version



SAMI instruments srl
 via Botte, 8
 35011 Reschigliano
 di Campodarsego • PD • Italy

tel. +39 049 9201939
 fax +39 049 9217549
 info@sami-instruments.com
 www.sami-instruments.com



Injection DBB

Ordering Information - Injection DBB Valves

Model	Style	Valve Configuration	Inlet Size	Out Size	Rating	Out Type	Material	Lenght	Options
JA	1	A	1	A	1	2	A	280	A

Style	
1	Block - Bleed - Block
3	Block - Block - Bleed
5	Block - Bleed
7	Block - Block
9	Block

Valve configuration	
A	BALL, NEEDLE, BALL
B	BALL, NEEDLE, NEEDLE
C	BALL, BALL, NEEDLE
D	BALL, NEEDLE
E	BALL, BALL

Inlet Size	
1	1/4" NPT-F
2	1/2" NPT-F
3	3/4" NPT-F
4	1" NPT-F
5	FLANGED = OUT

Outlet Size	
A	1/2"
B	3/4"
C	1"
D	1 - 1/2"
E	2"

Pressure Rating	
1	150 lbs
2	300 lbs
3	600 lbs
4	900 lbs
5	1500 lbs
6	2500 lbs

End Type	
A	RF Stock Finish
B	RF Smooth Finish
C	RF Concentring
D	RF Spiral
E	RTJ Ring Joint
F	FF Stock Finish
G	FF Smooth Finish
H	FF Concentric
I	FF Spiral

Material	
A	Aisi 316L
C	Aisi 316 Ti
D	Monel 400
E	Duplex F51
G	Super Duplex F55
H	HASTELLOY C276
I	INCONEL 625
J	INCOLLOY 825
L	TITANIUM
M	A350-LF2
Q	ASTM B148

Quill/Probe Lenght
XXX

Options	
A	Drain / Vent 1/4"
B	Drain / Vent 3/4"
C	Locking
D	Drain/Vent A-T
E	BSPP Thread - Out
F	BSPT Thread - Out
G	Painted
H	Ball Packing - Peek
I	Anti-Vibration Support
L	Ball Packing - Devlon

Model	
JA	INJECTION BALL Ø 10 Threaded/Flanged PTFE - CHECK VALVE DRAIN 1/2" NPT QUILL 45°
JB	INJECTION BALL Ø 10 Flanged/Flanged PTFE - CHECK VALVE DRAIN 1/2" NPT QUILL 45°
JD	INJECTION BALL Ø 10 Threaded/Flanged PTFE - CHECK VALVE DRAIN 1/2" NPT QUILL TYPE "B" (CLOSED)
JE	INJECTION BALL Ø 10 Flanged/Flanged PTFE - CHECK VALVE DRAIN 1/2" NPT QUILL TYPE "B" (CLOSED)



SAMI instruments srl
 via Botte, 8
 35011 Reschigliano
 di Campodarsego • PD • Italy

tel. +39 049 9201939
 fax +39 049 9217549
 info@sami-instruments.com
 www.sami-instruments.com



Sampling DBB



Ordering Information - Sampling DBB Valves

Model	Style	Valve Configuration	Pressure Rating	In Size	End Type	Out Size	Material	Lenght	Options
SF	1	A	1	A	B	2	A	280	A

Style

1	Block - Bleed - Block
3	Block - Block - Bleed
5	Block - Bleed
7	Block - Block
9	Block

Valve configuration

A	BALL, NEEDLE, BALL
B	BALL, NEEDLE, NEEDLE
C	BALL, BALL, NEEDLE
D	BALL, NEEDLE
E	BALL, BALL
F	BALL

Pressure Rating

1	150 lbs
2	300 lbs
3	600 lbs
4	900 lbs
5	1500 lbs
6	2500 lbs

Inlet Size

A	1/2"
B	3/4"
C	1"
D	1 1/2"
E	2"

Outlet Size

1	1/4" NPT-F
2	1/2" NPT-F
3	3/4" NPT -F
4	1" NPT-F
5	Flanged = IN

End Type

A	RF Stock Finish
B	RF Smooth Finish
C	RF Concentring
D	RF Spiral
E	RTJ Ring Joint
F	FF Stock Finish
G	FF Smooth Finish
H	FF Concentric
I	FF Spiral
J	NPT

Material

A	Aisi 316L
C	Aisi 316 Ti
D	Monel 400
E	Duplex F51
F	Super Duplex F53
G	Super Duplex F55
H	HASTELLOY C276
I	INCONEL 625
J	INCOLLOY 825
L	TITANIUM
M	A350-LF2
Q	ASTM B148

Quill/Probe

Lenght

XXX

Options

A	Drain / Vent 1/4"
B	Drain / Vent 3/4"
C	Locking device
D	Drain/Vent A-T
E	BSPP Thread - Out
F	BSPT Thread - Out
G	Painted
H	Ball Packing - Peek
I	Anti-Vibration support
O	PTFE

Model

SF	SAMPLING BALL Ø 10 Flanged/Threaded
SL	SAMPLING BALL Ø 10 Flanged/Flanged



SAMI instruments srl
 via Botte, 8
 35011 Reschigliano
 di Campodarsego • PD • Italy

tel. +39 049 9201939
 fax +39 049 9217549
 info@sami-instruments.com
 www.sami-instruments.com

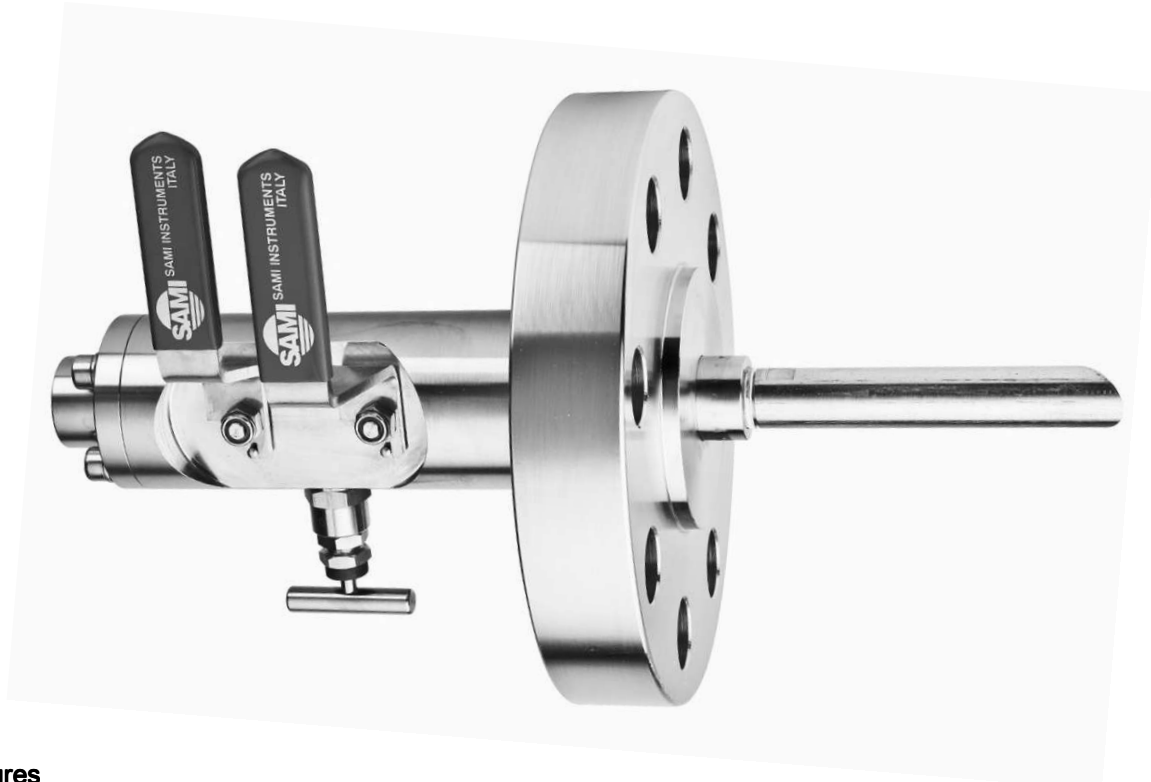


Some applications require to extract a sample of the process fluid or to inject a particular chemical directly into the process stream at full operating pressure and temperature.

To meet this requirement our range of Double Block and Bleed Valves can be fitted with either an Injection Quill or a Sampling Probe designed to meet the individual needs.

This kind of DBB Valves can be fitted with an integral check valve to prevent back flow into the process stream.

A bolted flange prevents the fitting from unscrewing during assembly.



Features

- Process interface in one compact ball/needle/ball valve assembly
- One piece forged body
- Available configurations: compact block, block and bleed and double block and bleed
- Flange connections in accordance with ASME B16.5 RF and RTJ; NPT connections in accordance with ASME B1.20.1
- Anti-blowout valve stems and needles
- Ratings from 150 up to 2500 lbs
- Stainless steel handle standard with full grip PVC sleeve
- Stop pin
- One-piece stem spindle
- Finished ball for low operating torque and long life
- Vibration resistant gland nut
- Externally adjustable gland
- Bore size 10 mm

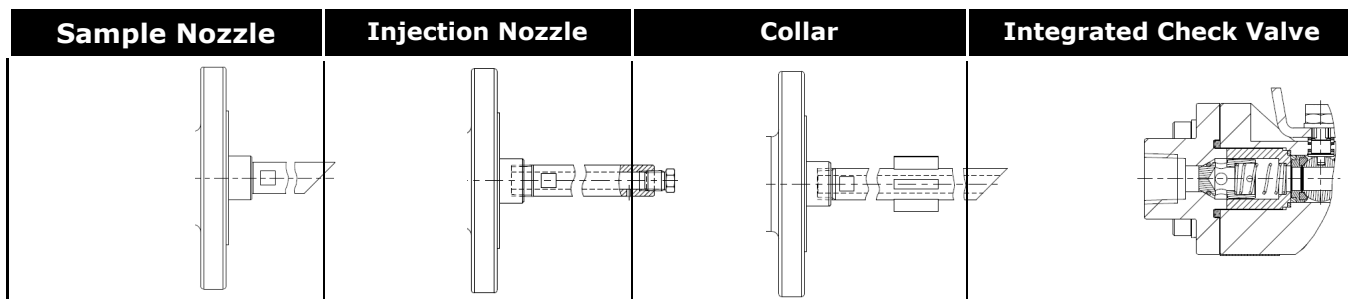
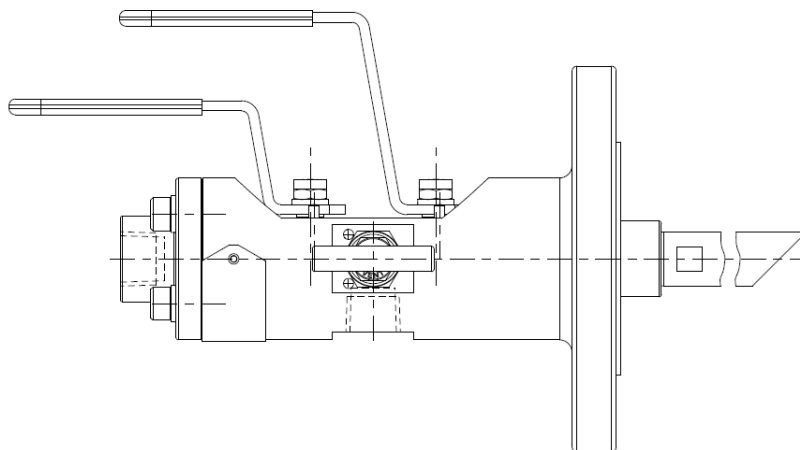
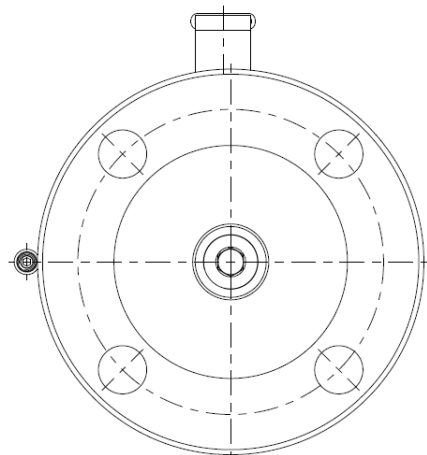


SAMI instruments srl
via Botte, 8
35011 Reschigliano
di Campodarsego • PD • Italy

tel. +39 049 9201939
fax +39 049 9217549
info@sami-instruments.com
www.sami-instruments.com

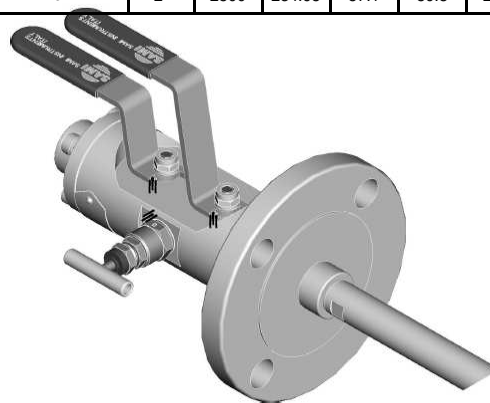
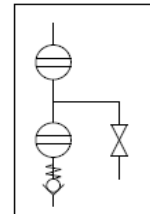


Injection DBB



PART NUMBER	FEATURES						
	RATING	A	B	C	D	E	
JA1A2A1BAXXX	1/2"	150	88.9	11.1	9.5	187	231
JA1A2B1BAXXX	3/4"	150	98.4	12.7	11.1	187	231
JA1A2C1BAXXX	1"	150	107.9	14.3	12.7	187	231
JA1A2D1BAXXX	1-1/2"	150	127	17.5	15.9	187	231
JA1A2E1BAXXX	2"	150	152.4	19.05	17.45	197	241
JA1A2A2BAXXX	1/2"	300	95.2	14.3	12.7	187	231
JA1A2B2BAXXX	3/4"	300	117.5	15.9	14.3	187	231
JA1A2C2BAXXX	1"	300	123.8	17.5	15.9	187	231
JA1A2D2BAXXX	1-1/2"	300	155.6	20.6	19	197	241
JA1A2E2BAXXX	2"	300	165.1	22.2	20.6	197	241
JA1A2A3BAXXX	1/2"	600	95.2	20.6	14.3	187	231
JA1A2B3BAXXX	3/4"	600	117.5	22.2	15.9	187	231
JA1A2C3BAXXX	1"	600	123.8	23.8	17.5	187	231
JA1A2D3BAXXX	1-1/2"	600	155.6	28.5	22.2	197	241
JA1A2E3BAXXX	2"	600	165.1	31.7	25.4	197	241
JA1A2A4BAXXX	1/2"	900	120.6	28.5	22.2	197	241
JA1A2B4BAXXX	3/4"	900	130.2	31.7	25.4	197	241
JA1A2C4BAXXX	1"	900	149.2	34.9	28.6	207	251
JA1A2D4BAXXX	1-1/2"	900	177.8	38	31.7	219	263
JA1A2E4BAXXX	2"	900	215.9	44.4	38.1	237	281

PART NUMBER	FEATURES						
	RATING	A	B	C	D	E	
JA1A2A5BAXXX	1/2"	1500	120.6	28.5	22.2	197	241
JA1A2B5BAXXX	3/4"	1500	130.2	31.7	25.4	197	241
JA1A2C5BAXXX	1"	1500	149.2	34.9	28.6	207	251
JA1A2D5BAXXX	1-1/2"	1500	177.8	38	31.7	219	263
JA1A2E5BAXXX	2"	1500	215.9	44.4	38.1	237	281
JA1A2A6BAXXX	1/2"	2500	133.35	36.5	30.2	207	251
JA1A2B6BAXXX	3/4"	2500	139.7	38	31.7	207	251
JA1A2C6BAXXX	1"	2500	158.75	41.2	34.9	207	251
JA1A2D6BAXXX	1-1/2"	2500	203.2	50.7	44.4	237	281
JA1A2E6BAXXX	2"	2500	234.95	57.1	50.8	237	281

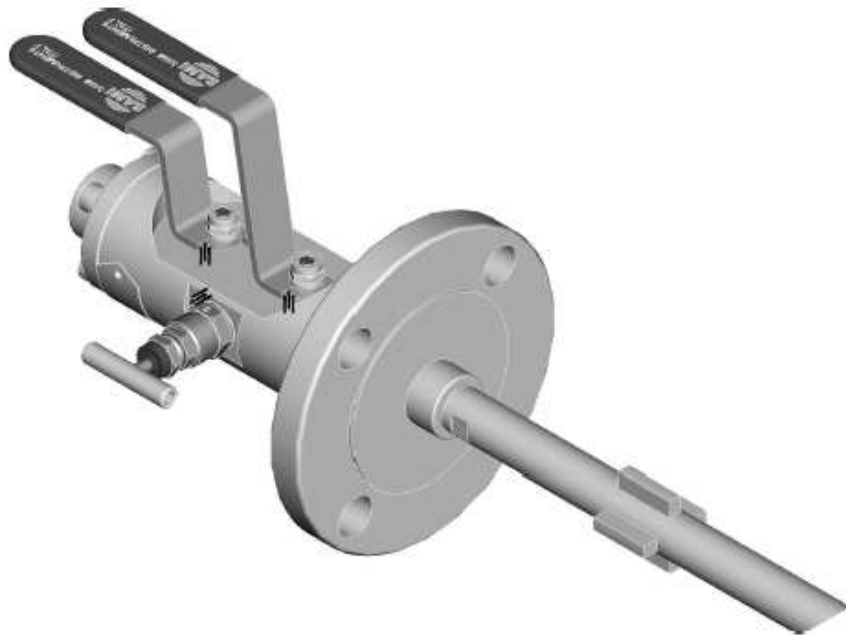
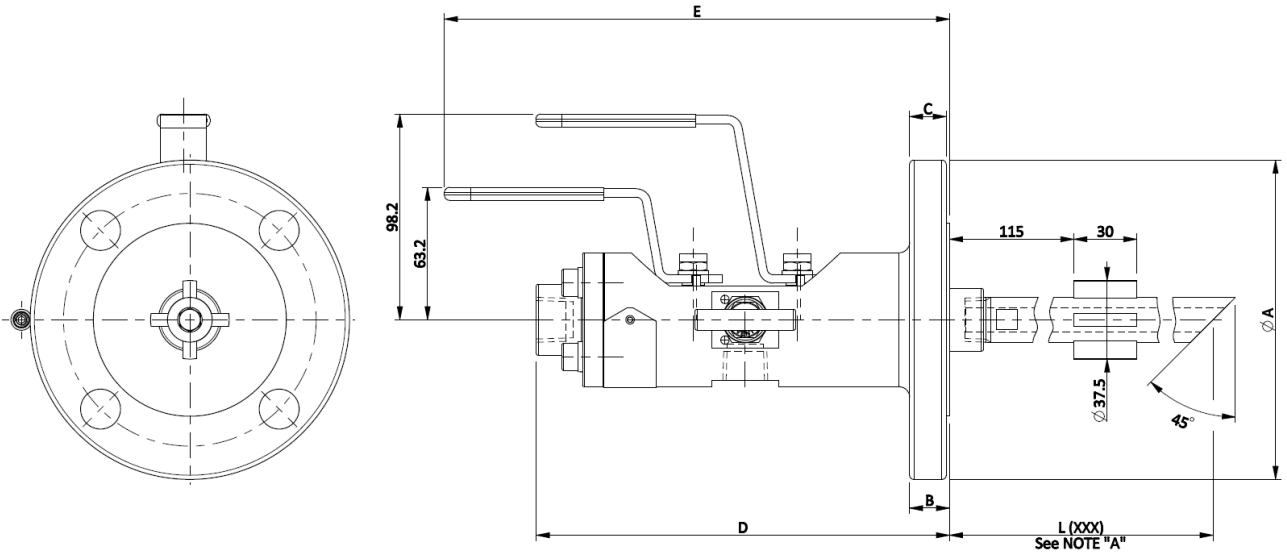


SAMI instruments srl
 via Botte, 8
 35011 Reschigliano
 di Campodarsego • PD • Italy

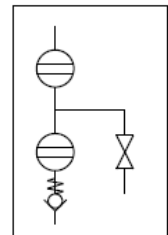
tel. +39 049 9201939
 fax +39 049 9217549
 info@sami-instruments.com
 www.sami-instruments.com



Injection DBB valve with anti-vibration collar



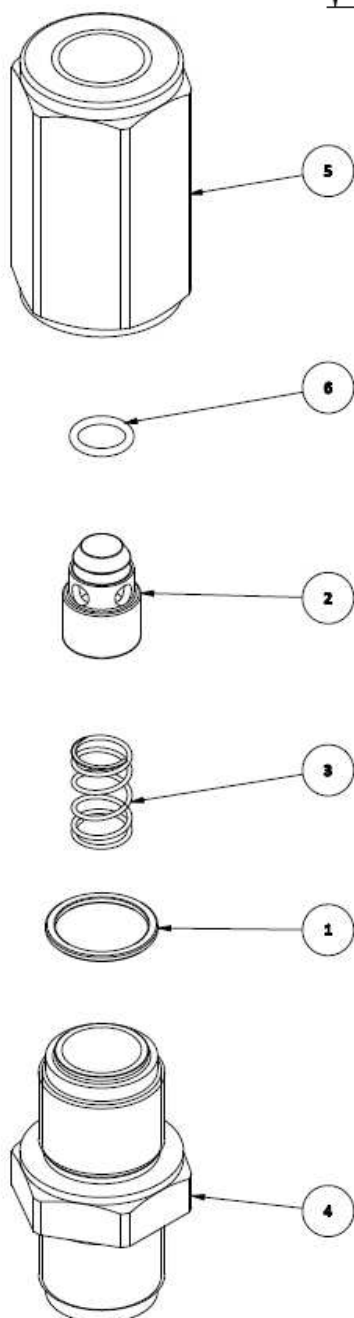
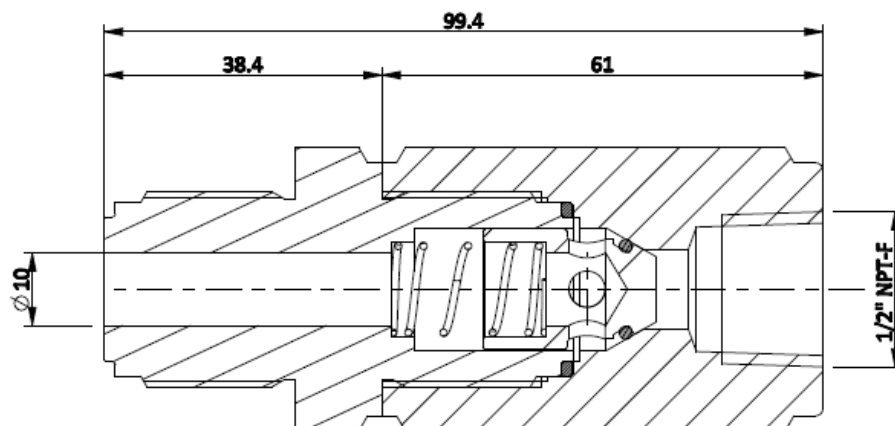
FLOW DIAGRAM



SAMI instruments srl
 via Botte, 8
 35011 Reschigliano
 di Campodarsego • PD • Italy

tel. +39 049 9201939
 fax +39 049 9217549
 info@sami-instruments.com
 www.sami-instruments.com





Materials Table

1	METAL SEAT	AISI 316L
2	CHECK VALVE SHUTTER	AISI 316L
3	SPRING	AISI 316
4	M/M FITTING	AISI 316L
5	1/2" NPT-F FITTING	AISI 316L
6	O-RING	VITON

Integrated check valve

This high integrity full bore non-return valve avoids the risk of back flow out of the process stream. The design uses a spring loaded poppet to ensure leak proof performance. The Non-Return Check Valve is designed for higher flow and low pressure drop across the valve - having a larger inner bore than most manufacturers of equivalent products.

As standard a viton o-ring will be supplied with a cracking pressure of 10 psig.



SAMI instruments srl
 via Botte, 8
 35011 Reschigliano
 di Campodarsego • PD • Italy

tel. +39 049 9201939
 fax +39 049 9217549
 info@sami-instruments.com
 www.sami-instruments.com



Ordering Information - Piping DBB Valves

Version	Model	Style	Valve Configuration	Pressure Rating	Inlet Size	End Type	Out Size	Material	Options
R	M	1	A	1	E	B	E	A	A

Style	
1	Block - Bleed - Block
3	Block - Block - Bleed
5	Block - Bleed
7	Block - Block
9	Block

Inlet Size	
A	1/2"
B	3/4"
C	1"
D	1 1/2"
E	2"
F	3"
1	1 13/16"
2	2 9/16"

Out Size	
1	1/4"
2	1/2"
3	3/4"
4	1"
5	1 1/2"
A	1/2"
B	3/4"
C	1"
D	1 1/2"
E	2"
F	3"
1	1 13/16"
2	2 9/16"

Material	
A	Aisi 316L
C	Aisi 316 Ti
D	Monel 400
E	Duplex F51
G	Super Duplex F55
H	HASTELLOY C276
I	INCONEL 625
J	INCOLLOY 825
L	TITANIUM
M	A350-LF2
Q	ASTM B148

Valve configuration	
A	BALL, NEEDLE, BALL
B	BALL, NEEDLE, NEEDLE
C	BALL, BALL, NEEDLE
E	BALL, NEEDLE
F	BALL, BALL
I	NEEDLE, NEEDLE, NEEDLE
O	BALL
R	BALL, BALL, BALL

Pressure Rating	
1	150 lbs
2	300 lbs
3	600 lbs
4	900 lbs
5	1500 lbs
6	2500 lbs
7	6,000 psi
8	10,000 psi
A	API 5K
B	API 10K
C	API 15K

End Type	
A	RF Stock Finish
B	RF Smooth Finish
C	RF Concentring
D	RF Spiral
E	RTJ Ring Joint
F	FF Stock Finish
G	FF Smooth Finish
H	FF Concentric
I	FF Spiral
J	NPT-F
L	BSP
M	BSPT
N	S.W.
O	B.W.

Options	
A	Drain / Vent 1/4"
B	Drain / Vent 3/4"
C	Locking Device (ball)
D	Locking Device (bonnet)
E	Drain/Vent Anti-Tamper
F	BSPP Thread - Out
G	BSPT Thread - Out
H	Standard Painting
L	AED O-Ring
M	Ball Packing Peek
O	2 Piece design
P	3 Piece design

Version	
R	Reduced Bore
F	Full Bore

Model			
A	BALL Ø 13 Flanged/Threaded	I	BALL Ø 25 Threaded/Threaded
B	BALL Ø 13 Flanged/Flanged	L	BALL Ø 38 Flanged/Threaded
C	BALL Ø 13 Threaded/Threaded	M	BALL Ø 38 Flanged/Flanged
D	BALL Ø 19 Flanged/Threaded	N	BALL Ø 42 Flanged/Flanged
E	BALL Ø 19 Flanged/Flanged	O	BALL Ø 42 Threaded/Threaded
F	BALL Ø 19 Threaded/Threaded	P	BALL Ø 49 Flanged/Threaded
G	BALL Ø 25 Flanged/Threaded	Q	BALL Ø 49 Flanged/Flanged
H	BALL Ø 25 Flanged/Flanged		



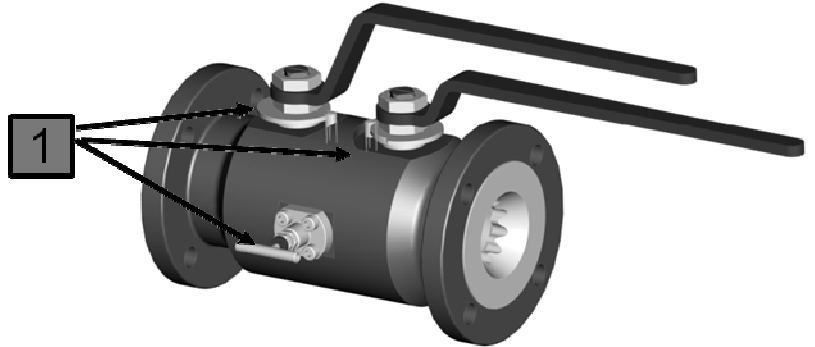
SAMI instruments srl
 via Botte, 8
 35011 Reschigliano
 di Campodarsego • PD • Italy

tel. +39 049 9201939
 fax +39 049 9217549
 info@sami-instruments.com
 www.sami-instruments.com



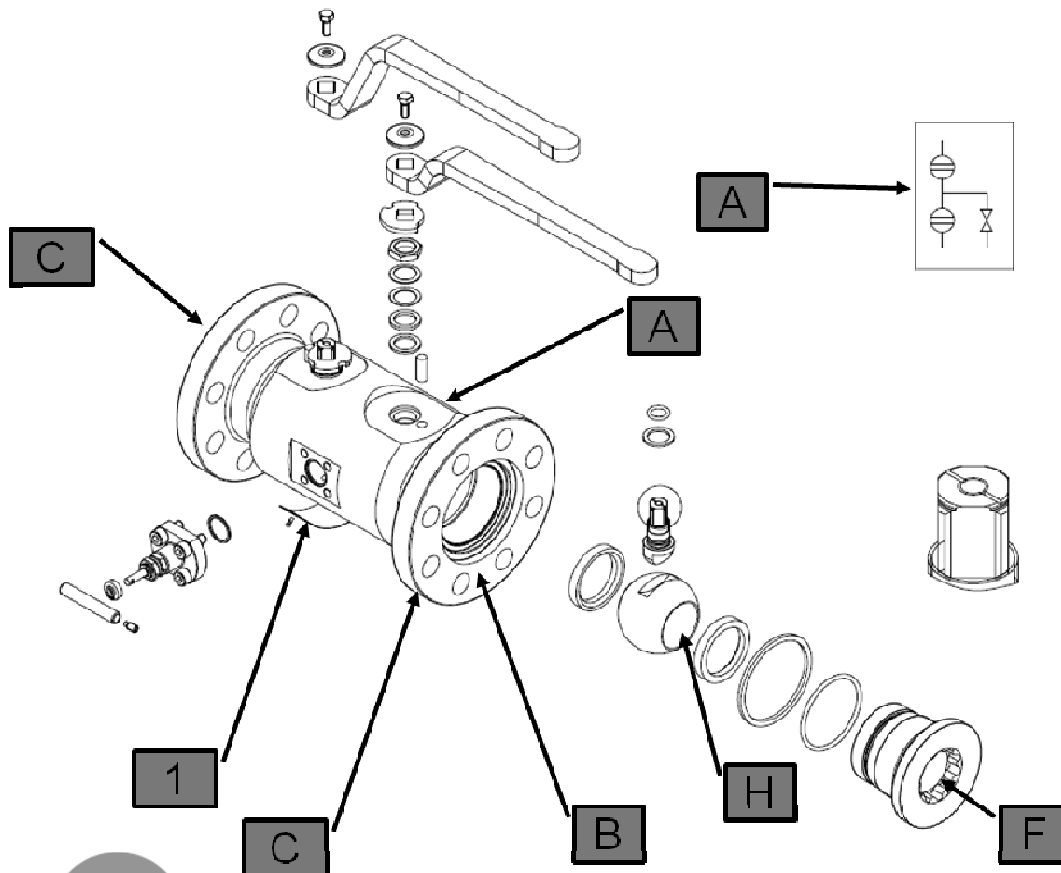
Code: *FH1A1CBCA*

F	FULL BORE
H	BALL \varnothing 25 mm Flanged/threaded
1	Block-Bleed-Block
A	Ball-Needle-Ball
1	Rating 150 lbs.
C	Inlet 1"
B	Flange end RF
C	Outlet 1"
A	Material AISI 316 L



Standard Ball Packing for 10 mm bore size:

- From rating 150 to 600 lbs included: PTFE Carbographe, standard O-Ring FKM. Temperature range: -20°C +180°C
- From rating 900 to rating 2500 lbs included: PEEK, standard O-Ring FKM. Temperature range: -20°C +180°C.
- Other packing materials are available on demand.



SAMI instruments srl
 via Botte, 8
 35011 Reschigliano
 di Campodarsego • PD • Italy

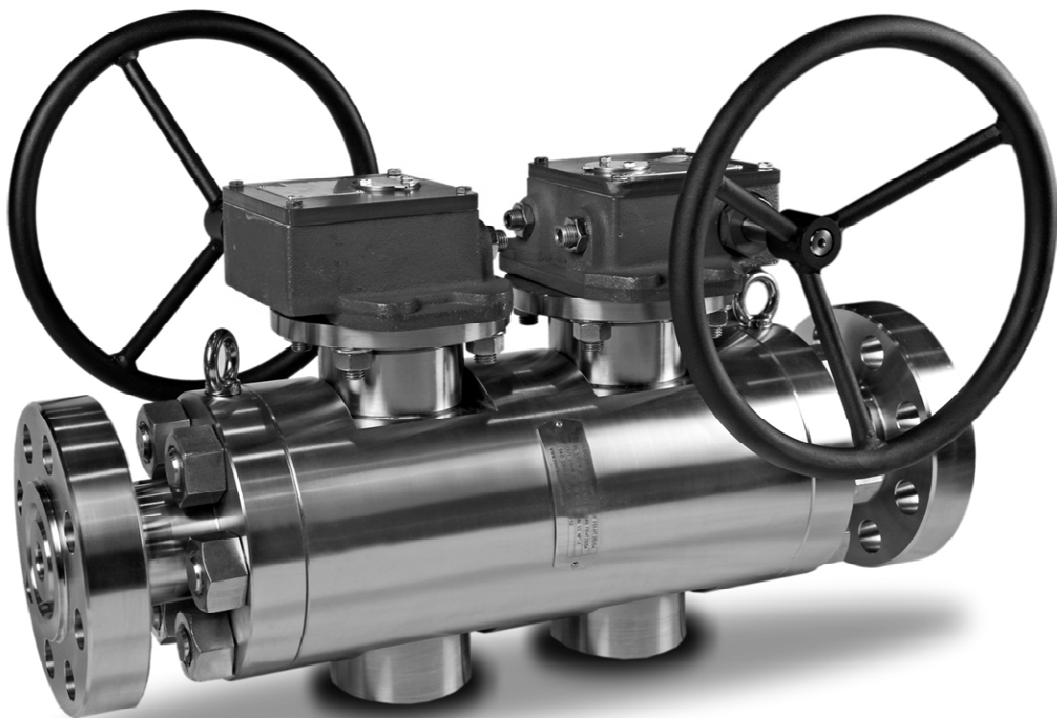
tel. +39 049 9201939
 fax +39 049 9217549
 info@sami-instruments.com
 www.sami-instruments.com



API 5K -10K -15K



Actuated DBB valve



SAMI instruments srl
 via Botte, 8
 35011 Reschigliano
 di Campodarsego • PD • Italy

tel. +39 049 9201939
 fax +39 049 9217549
 info@sami-instruments.com
 www.sami-instruments.com



Special Projects



DBB - O.S.&Y./NEEDLE/NEEDLE
API 10K
Inlet: 1 13/16 "
Outlet: 1/2 " NPT-F
Material: DUPLEX F51
Painted



SBB - BALL/NEEDLE
Rating: ANSI 1500 RTJ
Inlet: 1 1/2 "
Outlet: 1 1/2 "
Material: A305 LF2
Painted



DBB - BALL/NEEDLE/BALL
API 10K
Inlet: 2 1/16 "
Outlet: 2 1/16 "
Material: DUPLEX F51
Painted



SAMI instruments srl
via Botte, 8
35011 Reschigliano
di Campodarsego • PD • Italy

tel. +39 049 9201939
fax +39 049 9217549
info@sami-instruments.com
www.sami-instruments.com



Notes



SAMI instruments srl
via Botte, 8
35011 Reschigliano
di Campodarsego • PD • Italy

tel. +39 049 9201939
fax +39 049 9217549
info@sami-instruments.com
www.sami-instruments.com

