

General Specifications

Diaphragm Seals With DPharp EJA and EJX Series Pressure Transmitters



The remote or direct mount DFS diaphragm seals are commonly used when process operating conditions extend beyond the normal operating limits of a pressure transmitter. Especially for dP level applications the use of (2) remote diaphragm seal(s) is the most appropriate and economic way to mount the instrument. Diaphragm seals are produced and mounted on Yokogawa DPharp EJA and EJX pressure transmitters by Badotherm®. For overall performance of the combination DPharp+DFS, see: www.basecal.com.

For services where one or more of the following conditions exist, the use of diaphragm seals is appropriate:

- High temperature processes (up to 600°C.)
- Clogging potential
- Frequent cleaning requirements
- Aggressive processes
- Highly viscous processes
- Abrasive processes
- Sanitary requirements
- Possible formation of H+ ions (gold coating)



Model code	Description	Page
DFS-BF	Diaphragm Seal BF - Blind flanged, Flush diaphragm. Available with wetted parts in stainless steels, polymer coatings and HC276 for NACE01-75 compliance	4
DFS-BFr	Diaphragm Seal BF - Blind flanged Flush diaphragm. With Ring Type Joint (RTJ) / Ring Joint Facing (RJF)	6
DFS-BRF	Diaphragm Seal BRF - Blind flanged, Flush diaphragm. With full wetted parts available in all exotic materials (covering the raised face of the seal)	8
DFS-BC	Diaphragm Seal BC - Cell type, flush diaphragm (pan-cake design), available with wetted parts in stainless steels, polymer coatings and HC276 for NACE01-75 compliance	10
DFS-BRC	Diaphragm Seal BRC - Cell type, flush diaphragm (pan-cake design), With full wetted parts available in all exotic materials (covering the raised face of the seal)	12
DFS-EXT	Diaphragm Seal EXT - Blind flanged with extension, flush diaphragm, available in all exotic materials.	14
DFS-USF	Diaphragm Seal USF - Universal Flanged, for increased diaphragm size without a change in process connection (2 piece design consisting of an upper part and lower part).	16
DFS-USLF	Diaphragm Seal USLF - Universal Flanged (Low pressure), for increased diaphragm size to 3" without a change in process connection (2 piece design consisting of an upper part and lower part).	18
DFS-UST	Diaphragm Seal UST - Universal Threaded, for increased diaphragm size without a change in process connection (2 piece design consisting of an upper part and lower part).	20
DSF-USLT	Diaphragm Seal USLT - Universal Threaded (Low pressure), for increased diaphragm size to 3" without a change in process connection (2 piece design consisting of an upper part and lower part).	22
DFS-PS	Diaphragm seal - Plug Seal (flush), threaded PN600 (applicable for EJA/x500 & 600 series with G1/2)	24
DFS-SA	Diaphragm seal - Sanitary Type with a selection of sanitary connections	25
DFS-ILS	Diaphragm seal - InLine Seal, available in stainless steel wetted parts only	26
DFS-FPC	Flanged Process connections for transmitters	27

Flange Body Material*
316(L) Stainless Steel - STANDARD
Hastelloy C276
Monel 400
Titanium

Diaphragm materials*
316(L) Stainless steel
304 Stainless steel
321 Stainless steel
Hastelloy C276, B2
Monel 400

Coatings
PFA
PTFE
ECTFE
Gold

Connection Ratings
cl. 150 RF Acc. ASME B16.5
cl. 300 RF
cl. 600 RF
cl. 900-1500 RF
cl. 2500 RF

Seal Process connections
1/2" to 1" NPT or BSP threaded
1/2"/DN15 to 4"/ DN100 flanged
50-100-150-200 Extended length
Flush rings

Tantalum
Titanium Gr. 2
Inconel 600, 625
Duplex 2205
Superduplex 2507
Nickel 200

Capillary
316SS with SS armour
316SS with SS armour+ PVC sleeve
2mm ID / 0,08"
1mm ID / 0,04"
316SS direct mount tube

PN25 Acc. EN1092-1
PN40
PN50
PN80
PN100

*Note: Not all wetted part materials are listed in the model numbers. Please contact your Yokogawa Representative for more information. For further information on the range of Yokogawa DPharp differential and static pressure transmitters please visit www.dpharp.com.

Filling fluids

Code	Temp limits		Description	Density @ 25°C	Badotherm reference
-F1	-20/+350°C	-4/+662°F	Silicon Oil	1,07	BSO-42
-F2	-40/+250°C	-40/+482°F	Fluorinated Oil	1,87	BSO-25
-F3	-50/+200°C	-58/+392°F	Silicon Oil	0,95	BSO-22
-F4	-15/+225°C	+5/+437°F	FDA approved	0,92	BSO-40
-F5	-40/+400°C	-40/+752°F	Silicon Oil	0,93	BSO-02
-F6	-80/+100°C	-112/+212°F	Fluorinated Oil	1,84	BSO-03
-F7	-10/+315°C	+14/+599°F	Silicon Oil	1,07	BSO-18
-F8	-40/+315°C	-40/+599°F	Silicon Oil	1,07	BSO-21
-F9	-80/+120°C	-112/+248°F	Silicon Oil	0,92	BSO-41
-F0	-20/+410(420)°C	-4/+770(788)°F	Silicon Oil	1,08	BSO-48

Badotherm Diaphragm Seal overview



Certificates

Each Instrument is standard supplied with following certificates:

3.1 Material Certificate acc. EN10204

Test Certificate (which includes calibration & for DP measurement a static pressure test and a vacuum test)

Additional certificates are available

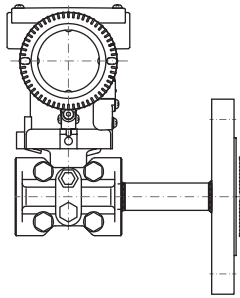
/K1 Degreasing Treatment I + certificate

/K2 Degreasing Treatment (applicable F2 fill) + certificate

/NACE NACE MR01-75 / ISO15156 standards (latest ed.) compliance

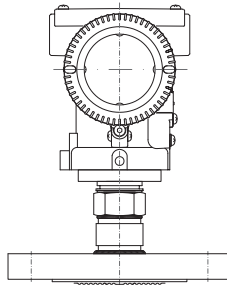
/BAS Basecal performance calculation report

Direct Mount EJA/EJX-110/430



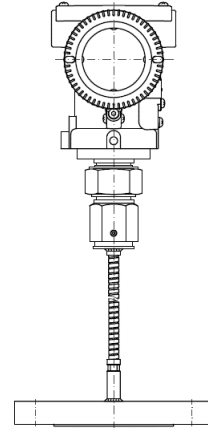
For temperature reduction or extension tube, select:
 /DM1 Extended Direct mount (80 mm)
 (temp reduction <100°C)
 /DM2 Extended Direct mount (150 mm)
 (temp reduction <175°C)
 /TR Temperature reducer
 (temp reduction <225°C)

Direct Mount EJA/EJX-530 Threaded

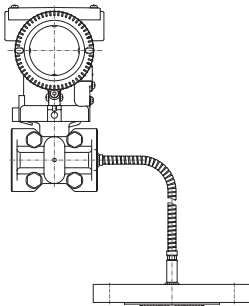


For temperature reduction or extension tube, select:
 /DM1 Extended Direct mount (80 mm)
 (temp reduction <100°C)
 /DM2 Extended Direct mount (150 mm)
 (temp reduction <175°C)
 /TR Temperature reducer
 (temp reduction <225°C)

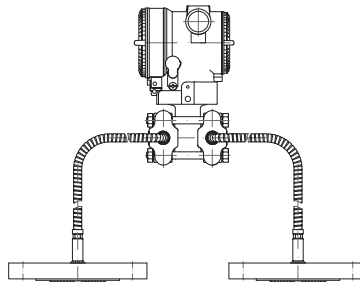
Remote Mount EJA/EJX-530/510 Threaded



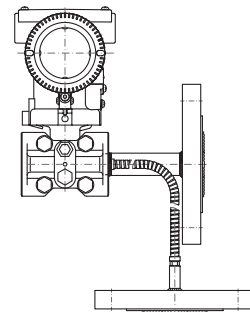
Remote Mount EJA/EJX-110/430 Single seal



Remote Mount EJA/EJX-110 2 seals

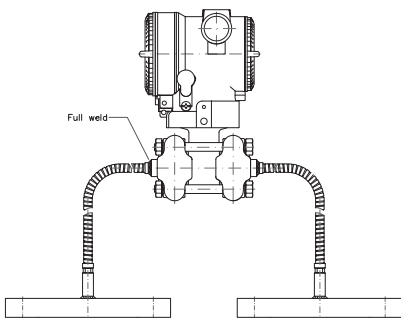


Direct Mount + Remote mount EJA/EJX - 110

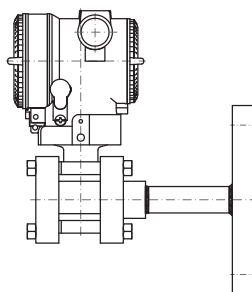


For temperature reduction or extension tube, select:
 /DM1 Extended Direct mount (80 mm)
 (temp reduction <100°C)
 /DM2 Extended Direct mount (150 mm)
 (temp reduction <175°C)
 /TR Temperature reducer
 (temp reduction <225°C)

Remote Mount EJA/EJX-110 2 seals Full welded construction

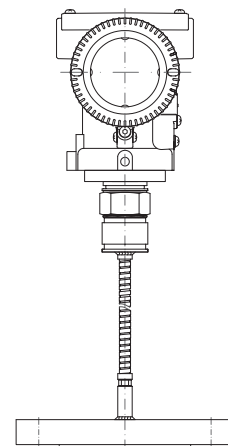


Remote Mount EJA/EJX-110/430 - Single seal Full welded construction



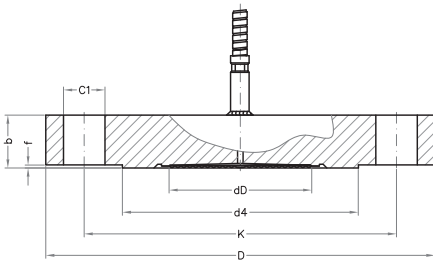
For temperature reduction or extension tube, select:
 /DM1 Extended Direct mount (80 mm)
 (temp reduction <100°C)
 /DM2 Extended Direct mount (150 mm)
 (temp reduction <175°C)
 /TR Temperature reducer
 (temp reduction <225°C)

Remote Mount EJA/EJX-530/510 - Single seal Full welded construction



GS 06P01Y01-E-E

Diaphragm Seal BF flush diaphragm, flanged type



1. Model				
EJAM	EJA100, 300 & 400 Series			
EJXM	EJX100, 300 & 400 Series			
TXCM	EJA-E100, 300 & 400 Series			
EJAP	EJA130 & 440Series			
EJXP	EJX130 & 440Series			
TXCP	EJA-E130 & 440Series			
EJAD	EJA500 Series (preferred connection "4" / WN)			
EJXD	EJX500 & 600 Series		(preferred connection "4" / WN)	
TXCD	EJA-E500 Series		(preferred connection "4" / WN)	
2. Seal type				
DFS-BF	Diaphragm Seal - Blind flange, Raised Face			
3. Mounting				
WN5	EJAM with N5 / EJXM / TXCM with W option =/N5 mandatory option			
XN5	EJAD / EJXD / TXCD no N5 / W available			
4. Flange Size & Rating				
02A1	1"	cl. 150 RF	acc. ASME B16.5	
02A2	1"	cl. 300 RF	acc. ASME B16.5	
02A4	1"	cl. 600 RF	acc. ASME B16.5	
02A6	1"	cl. 1500 RF	acc. ASME B16.5	
02A7	1"	cl. 2500 RF	acc. ASME B16.5	
04A1	1,5"	cl. 150 RF	acc. ASME B16.5	
04A2	1,5"	cl. 300 RF	acc. ASME B16.5	
04A4	1,5"	cl. 600 RF	acc. ASME B16.5	
04A6	1,5"	cl. 1500 RF	acc. ASME B16.5	
04A7	1,5"	cl. 2500 RF	acc. ASME B16.5	
05A1	2"	cl. 150 RF	acc. ASME B16.5	
05A2	2"	cl. 300 RF	acc. ASME B16.5	
05A4	2"	cl. 600 RF	acc. ASME B16.5	
05A6	2"	cl. 1500 RF	acc. ASME B16.5	
05A7	2"	cl. 2500 RF	acc. ASME B16.5	
08A1	3"	cl. 150 RF	acc. ASME B16.5	
08A2	3"	cl. 300 RF	acc. ASME B16.5	
08A4	3"	cl. 600 RF	acc. ASME B16.5	
08A5	3"	cl. 900 RF	acc. ASME B16.5	
08A6	3"	cl. 1500 RF	acc. ASME B16.5	
08A7	3"	cl. 2500 RF	acc. ASME B16.5	
10A1	4"	cl. 150 RF	acc. ASME B16.5	
10A2	4"	cl. 300 RF	acc. ASME B16.5	
02D4	DN25	PN10-40	form B1	acc. EN 1092-1
02D5	DN25	PN63	form B1	acc. EN 1092-1
02D6	DN25	PN100	form B1	acc. EN 1092-1
04D4	DN40	PN10-40	form B1	acc. EN 1092-1
05D4	DN50	PN10-40	form B1	acc. EN 1092-1
05D5	DN50	PN63	form B1	acc. EN 1092-1
08D4	DN80	PN10-40	form B1	acc. EN 1092-1
10D2	DN100	PN10-16	form B1	acc. EN 1092-1
10D4	DN100	PN25-40	form B1	acc. EN 1092-1
5. Flange Material				
SS	SS AISI 316(L)			
6. Diaphragm Material				
SS	SS AISI 316(L)			
HC	Hastelloy C276			
DU	Duplex 2205			
A1	25 µm gold (24 Crt)	size 05	on diaphragm	
A2	40 µm gold (24 Crt)	size 05	on wetted parts	
A3	25 µm gold (24 Crt)	size 08	on diaphragm	
A4	40 µm gold (24 Crt)	size 08	on wetted parts	
PF	Coating PFA	(+/- 40 µm thickness)	(anti-stick only)	
PT	Coating PTFE	(+/- 35 µm thickness)	(anti-stick only)	
7. Fill Fluid				
-F1	BSO-42	Silicon Oil	-20/+350°C	-4/+662°F
-F2	BSO-25	Fluorinated Oil	-40/+250°C	-40/+482°F
-F3	BSO-22	Silicon Oil	-50/+200°C	-58/+392°F
-F4	BSO-40	FDA approved	-15/+225°C	+5/+437°F
-F5	BSO-02	Silicon Oil	-40/+400°C	-40/+752°F
-F6	BSO-03	Fluorinated Oil	-80/+100°C	-112/+212°F
-F7	BSO-18	Silicon Oil	-10/+315°C	+14/+599°F
-F8	BSO-21	Silicon Oil	-40/+315°C	-40/+599°F
-F9	BSO-41	Silicon Oil	-80/+120°C	-112/+248°F
-F0	BSO-48	Silicon Oil	-20/+410(420)°C	-4/+770(788)°F

8. Capillary Size / Type (AISI 316 Stainless Steel Armoured)

NN	Direct coupled / Welded (No Capillary)	
C1	Capillary (2mm ID)	axial
C2	Capillary (2mm ID)	radial

9. Capillary Length

NN	Direct coupled / Welded (No Capillary)	
01	1 m	3 ft
1A	1,5 m	5 ft
02	2 m	6 ft
03	3 m	10 ft
04	4 m	13 ft
05	5 m	15 ft
06	6 m	20 ft
07	7 m	23 ft
08	8 m	25 ft
09	9 m	30 ft
10	10 m	33 ft
11	11 m	35 ft
12	12 m	40 ft
13	13 m	43 ft
14	14 m	45 ft
15	15 m	50 ft
ZZ	User-defined, per m / ft	

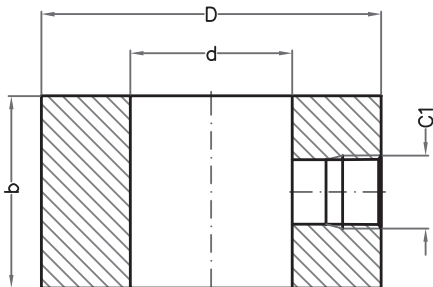
10. Flush rings in AISI 316(L)

/FL01	size 02 RF/B1	Mat. 316(L); unplugged	1 x 1/4" NPT
/FL02	size 02 RF/B1	Mat. 316(L); unplugged	1 x 1/2" NPT
/FL03	size 04 RF/B1	Mat. 316(L); unplugged	1 x 1/4" NPT
/FL04	size 04 RF/B1	Mat. 316(L); unplugged	1 x 1/2" NPT
/FL05	size 05 RF/B1	Mat. 316(L); unplugged	1 x 1/4" NPT
/FL06	size 05 RF/B1	Mat. 316(L); unplugged	1 x 1/2" NPT
/FL07	size 08 RF/B1	Mat. 316(L); unplugged	1 x 1/4" NPT
/FL08	size 08 RF/B1	Mat. 316(L); unplugged	1 x 1/2" NPT
/FL09	size 10 RF/B1	Mat. 316(L); unplugged	1 x 1/4" NPT
/FL10	size 10 RF/B1	Mat. 316(L); unplugged	1 x 1/2" NPT
/F21	Second flush port 1/4" NPTf		
/F22	Second flush port 1/2" NPTf		
/FLV1	Vent plugs 1/4"		
/FLV2	Vent plugs 1/2"		
/FLP1	Blind plugs 1/4"		
/FLP2	Blind plugs 1/2"		
/FV91	Pair flush valves BDTV911 - std		for 1/4" ports (fitted)
/FV92	Pair flush valves BDTV911 - std		for 1/2" ports (fitted)
/FV93	Single flush valve BDTV911 - std		for 1/4" port (fitted)
/FV94	Single flush valve BDTV911 - std		for 1/2" port (fitted)

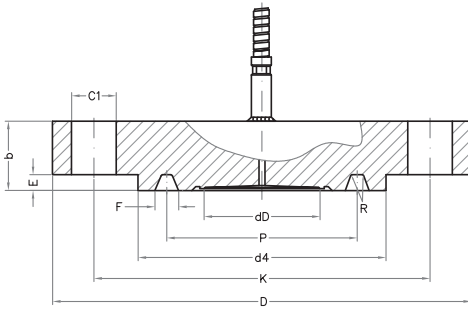
11. Options

/N5	EJX/EJA100/300/400 + W / N5 option Low volume covers by Yokogawa		
/FW	Full welded construction	recommended for vacuum service	
/DM1	Extended Direct mount (80 mm)	(temp reduction <100°C)	
/DM2	Extended Direct mount (150 mm)	(temp reduction <175°C)	
/TR	Temperature reducer	(temp reduction <225°C)	
/IC1	Capillary ID 1 mm. / 0,04"		
/BS6	Black sleeve on capillary ≤ 6 m.		
/BS15	Black sleeve on capillary > 6 ≤ 15 m.		
/LH	Lifting handles (recomm.for ≥ cl. 900)		
/K1	Degreasing Treatment I + certificate		
/K2	Degreasing Treatment (applicable F2 fill) + certificate		
/NACE	NACE MR01-75 / ISO15156 standards (latest ed.) compliance		
/BAS	Basecal performance calculation report		per tag
/DP	Dye penetrant test pressurized welds + certificate		per tag

Flush ring



Diaphragm Seal BFr flush diaphragm, flanged type

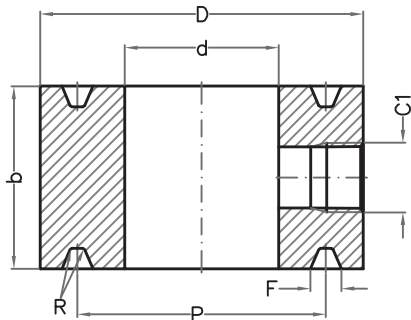


1. Model				
EJAM	EJA100, 300 & 400 Series			
EJXM	EJX100, 300 & 400 Series			
TXCM	EJA-E100, 300 & 400 Series			
EJAP	EJA130 & 440Series			
EJXP	EJX130 & 440Series			
TXCP	EJA-E130 & 440Series			
EJAD	EJA500 Series	(preferred connection "4" / WN)		
EJXD	EJX500 & 600 Series	(preferred connection "4" / WN)		
TXCD	EJA-E500 Series	(preferred connection "4" / WN)		
2. Seal type				
DFS-BFr	Diaphragm Seal - Blind flange, Ring Joint Facing			
3. Mounting				
WN5	EJAM with N5 / EJXM / TXCM with W option =/N5 mandatory option			
XN5	EJAD / EJXD / TXCD no N5 / W available			
4. Flange Size & Rating				
05A1	2"	cl. 150 RJF	acc. ASME B16.5	
05A2	2"	cl. 300 RJF	acc. ASME B16.5	
05A4	2"	cl. 600 RJF	acc. ASME B16.5	
05A6	2"	cl. 1500 RJF	acc. ASME B16.5	
05A7	2"	cl. 2500 RJF	acc. ASME B16.5	
08A1	3"	cl. 150 RJF	acc. ASME B16.5	
08A2	3"	cl. 300 RJF	acc. ASME B16.5	
08A4	3"	cl. 600 RJF	acc. ASME B16.5	
08A5	3"	cl. 900 RJF	acc. ASME B16.5	
08A6	3"	cl. 1500 RJF	acc. ASME B16.5	
08A7	3"	cl. 2500 RJF	acc. ASME B16.5	
1669	1-13/16"	6BX 69MPa (10kPSI)	acc.API 6A ISO 10423 - TYPE 6BX	
2669	2-1/16"	6BX 69MPa (10kPSI)	acc.API 6A ISO 10423 - TYPE 6BX	
5. Flange Material				
SS	SS AISI 316(L)			
6. Diaphragm Material				
SS	SS AISI 316(L)			
HC	Hastelloy C276			
DU	Duplex 2205			
A1	25 µm gold (24 Cr)	size 05	on diaphragm	
A2	40 µm gold (24 Cr)	size 05	on wetted parts	
A3	25 µm gold (24 Cr)	size 08	on diaphragm	
A4	40 µm gold (24 Cr)	size 08	on wetted parts	
PF	Coating PFA	(+/- 40 µm thickness)	(anti-stick only)	
PT	Coating PTFE	(+/- 35 µm thickness)	(anti-stick only)	
7. Fill Fluid				
-F1	BSO-42	Silicon Oil	-20/+350°C	-4/+662°F
-F2	BSO-25	Fluorinated Oil	-40/+250°C	-40/+482°F
-F3	BSO-22	Silicon Oil	-50/+200°C	-58/+392°F
-F4	BSO-40	FDA approved	-15/+225°C	+5/+437°F
-F5	BSO-02	Silicon Oil	-40/+400°C	-40/+752°F
-F6	BSO-03	Fluorinated Oil	-80/+100°C	-112/+212°F
-F7	BSO-18	Silicon Oil	-10/+315°C	+14/+599°F
-F8	BSO-21	Silicon Oil	-40/+315°C	-40/+599°F
-F9	BSO-41	Silicon Oil	-80/+120°C	-112/+248°F
-F0	BSO-48	Silicon Oil	-20/+410(420)°C	-4/+770(788)°F
8. Capillary Size / Type (AISI 316 Stainless Steel Armoured)				
NN	Direct coupled / Welded (No Capillary)			
C1	Capillary (2mm ID)	axial		
C2	Capillary (2mm ID)	radial		

9. Capillary Length

NN	Direct coupled / Welded (No Capillary)	
01	1 m	3 ft
1A	1,5 m	5 ft
02	2 m	6 ft
03	3 m	10 ft
04	4 m	13 ft
05	5 m	15 ft
06	6 m	20 ft
07	7 m	23 ft
08	8 m	25 ft
09	9 m	30 ft
10	10 m	33 ft
11	11 m	35 ft
12	12 m	40 ft
13	13 m	43 ft
14	14 m	45 ft
15	15 m	50 ft
ZZ	User-defined, per m / ft	

Flush ring



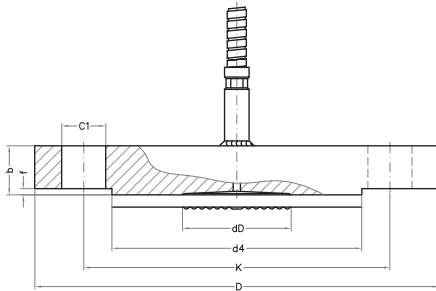
10. Flush rings in AISI 316(L)

/FL5A1	2"	cl. 150 RJF	Mat, 316(L) 1 x 1/4" NPT; unplugged
/FL5A2	2"	cl. 300 RJF	Mat, 316(L) 1 x 1/4" NPT; unplugged
/FL5A4	2"	cl. 600 RJF	Mat, 316(L) 1 x 1/4" NPT; unplugged
/FL5A6	2"	cl. 1500 RJF	Mat, 316(L) 1 x 1/4" NPT; unplugged
/FL5A7	2"	cl. 2500 RJF	Mat, 316(L) 1 x 1/4" NPT; unplugged
/FL8A1	3"	cl. 150 RJF	Mat, 316(L) 1 x 1/4" NPT; unplugged
/FL8A2	3"	cl. 300 RJF	Mat, 316(L) 1 x 1/4" NPT; unplugged
/FL8A4	3"	cl. 600 RJF	Mat, 316(L) 1 x 1/4" NPT; unplugged
/FL8A5	3"	cl. 900 RJF	Mat, 316(L) 1 x 1/4" NPT; unplugged
/FL8A6	3"	cl. 1500 RJF	Mat, 316(L) 1 x 1/4" NPT; unplugged
/FL8A7	3"	cl. 2500 RJF	Mat, 316(L) 1 x 1/4" NPT; unplugged
/FL169	1-13/16"	6BX 69MPa (10kPSI)	Mat, 316(L) 1 x 1/4" NPT; unplugged
/FL269	2-1/16"	6BX 69MPa (10kPSI)	Mat, 316(L) 1 x 1/4" NPT; unplugged
/F20	Flush port 1 x 1/2" NPTf		
/F21	Second flush port 1/4" NPTf		
/F22	Second flush port 1/2" NPTf		
/FLV1	Vent plugs 1/4"		
/FLV2	Vent plugs 1/2"		
/FLP1	Blind plugs 1/4"		
/FLP2	Blind plugs 1/2"		
/FV91	Pair flush valves BDTV911 - std	for 1/4" ports (fitted)	
/FV92	Pair flush valves BDTV911 - std	for 1/2" ports (fitted)	
/FV93	Single flush valve BDTV911 - std	for 1/4" port (fitted)	
/FV94	Single flush valve BDTV911 - std	for 1/2" port (fitted)	

11. Options

/N5	EJX/EJA100/300/400 + W / N5 option	Low volume covers by Yokogawa
/FW	Full welded construction	recommended for vacuum service
/DM1	Extended Direct mount (80 mm)	(temp reduction <100°C)
/DM2	Extended Direct mount (150 mm)	(temp reduction <175°C)
/TR	Temperature reducer	(temp reduction <225°C)
/IC1	Capillary ID 1 mm. / 0,04"	
/BS6	Black sleeve on capillary ≤ 6 m.	
/BS15	Black sleeve on capillary > 6 ≤ 15 m.	
/LH	Lifting handles (recomm.for ≥ cl. 900)	
/K1	Degreasing Treatment I + certificate	
/K2	Degreasing Treatment (applicable F2 fill) + certificate	
/NACE	NACE MR01-75 / ISO15156 standards (latest ed.) compliance	
/BAS	Basecal performance calculation	per tag
/DP	Dye penetrant test pressurized welds + certificate	per tag

Diaphragm Seal BRF flush diaphragm, flanged type



1. Model				
EJAM	EJA100, 300 & 400 Series			
EJXM	EJX100, 300 & 400 Series			
TXCM	EJA-E100, 300 & 400 Series			
EJAP	EJA130 & 440Series			
EJXP	EJX130 & 440Series			
TXCP	EJA-E130 & 440Series			
EJAD	EJA500 Series	(preferred connection "4" / WN)		
EJXD	EJX500 & 600 Series	(preferred connection "4" / WN)		
TXCD	EJA-E500 Series	(preferred connection "4" / WN)		
2. Seal type				
DFS-BRF	Diaphragm Seal - Blind flange, Raised Face			
3. Mounting				
WN5	EJAM with N5 / EJXM / TXCM with W option =/N5 mandatory option			
XN5	EJAD / EJXD / TXCD no N5 / W available			
4. Flange Size & Rating				
02A1	1"	cl. 150 RF	acc. ASME B16.5	
02A2	1"	cl. 300 RF	acc. ASME B16.5	
02A4	1"	cl. 600 RF	acc. ASME B16.5	
02A6	1"	cl. 1500 RF	acc. ASME B16.5	
02A7	1"	cl. 2500 RF	acc. ASME B16.5	
04A1	1,5"	cl. 150 RF	acc. ASME B16.5	
04A2	1,5"	cl. 300 RF	acc. ASME B16.5	
04A4	1,5"	cl. 600 RF	acc. ASME B16.5	
04A6	1,5"	cl. 1500 RF	acc. ASME B16.5	
04A7	1,5"	cl. 2500 RF	acc. ASME B16.5	
05A1	2"	cl. 150 RF	acc. ASME B16.5	
05A2	2"	cl. 300 RF	acc. ASME B16.5	
05A4	2"	cl. 600 RF	acc. ASME B16.5	
05A6	2"	cl. 1500 RF	acc. ASME B16.5	
05A7	2"	cl. 2500 RF	acc. ASME B16.5	
08A1	3"	cl. 150 RF	acc. ASME B16.5	
08A2	3"	cl. 300 RF	acc. ASME B16.5	
08A4	3"	cl. 600 RF	acc. ASME B16.5	
08A5	3"	cl. 900 RF	acc. ASME B16.5	
08A6	3"	cl. 1500 RF	acc. ASME B16.5	
08A7	3"	cl. 2500 RF	acc. ASME B16.5	
10A1	4"	cl. 150 RF	acc. ASME B16.5	
10A2	4"	cl. 300 RF	acc. ASME B16.5	
02D4	DN25	PN10-40	form B1	acc. EN 1092-1
02D5	DN25	PN63	form B1	acc. EN 1092-1
02D6	DN25	PN100	form B1	acc. EN 1092-1
04D4	DN40	PN10-40	form B1	acc. EN 1092-1
05D4	DN50	PN10-40	form B1	acc. EN 1092-1
05D5	DN50	PN63	form B1	acc. EN 1092-1
08D4	DN80	PN10-40	form B1	acc. EN 1092-1
10D2	DN100	PN10-16	form B1	acc. EN 1092-1
10D4	DN100	PN25-40	form B1	acc. EN 1092-1
5. Flange Material				
SS	SS AISI 316(L)			
6. Wetted parts material (Diaphragm Material & Raised face covered)				
HB	Hastelloy B2			
HC	Hastelloy C276			
I6	Inconel 600			
DU	Duplex 2205			
SD	Super Duplex 2507			
M4	Monel 400			
N2	Nickel 201			
TA	Tantalum			
S4	AISI304L			
S2	AISI321			
7. Fill Fluid				
-F1	BSO-42	Silicon Oil	-20/+350°C	-4/+662°F
-F2	BSO-25	Fluorinated Oil	-40/+250°C	-40/+482°F
-F3	BSO-22	Silicon Oil	-50/+200°C	-58/+392°F
-F4	BSO-40	FDA approved	-15/+225°C	+5/+437°F
-F5	BSO-02	Silicon Oil	-40/+400°C	-40/+752°F
-F6	BSO-03	Fluorinated Oil	-80/+100°C	-112/+212°F
-F7	BSO-18	Silicon Oil	-10/+315°C	+14/+599°F
-F8	BSO-21	Silicon Oil	-40/+315°C	-40/+599°F
-F9	BSO-41	Silicon Oil	-80/+120°C	-112/+248°F
-F0	BSO-48	Silicon Oil	-20/+410(420)°C	-4/+770(788)°F

8. Capillary Size / Type (AISI 316 Stainless Steel Armoured)

NN	Direct coupled / Welded (No Capillary)	
C1	Capillary (2mm ID)	axial
C2	Capillary (2mm ID)	radial

9. Capillary Length

NN	Direct coupled / Welded (No Capillary)	
01	1 m	3 ft
1A	1,5 m	5 ft
02	2 m	6 ft
03	3 m	10 ft
04	4 m	13 ft
05	5 m	15 ft
06	6 m	20 ft
07	7 m	23 ft
08	8 m	25 ft
09	9 m	30 ft
10	10 m	33 ft
11	11 m	35 ft
12	12 m	40 ft
13	13 m	43 ft
14	14 m	45 ft
15	15 m	50 ft
ZZ	User-defined, per m / ft	

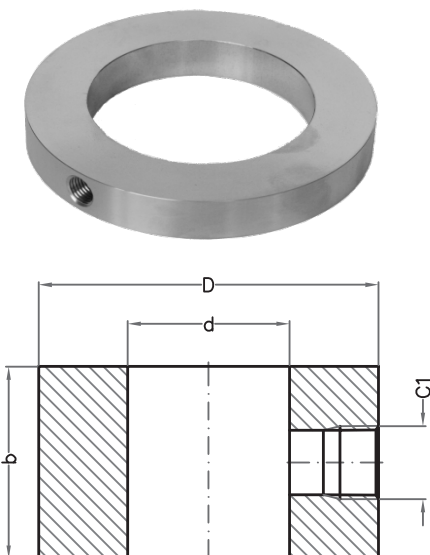
10. Flush rings in AISI 316(L)

/FL01	size 02 RF/B1	Mat. 316(L); unplugged	1 x 1/4" NPT
/FL02	size 02 RF/B1	Mat. 316(L); unplugged	1 x 1/2" NPT
/FL03	size 04 RF/B1	Mat. 316(L); unplugged	1 x 1/4" NPT
/FL04	size 04 RF/B1	Mat. 316(L); unplugged	1 x 1/2" NPT
/FL05	size 05 RF/B1	Mat. 316(L); unplugged	1 x 1/4" NPT
/FL06	size 05 RF/B1	Mat. 316(L); unplugged	1 x 1/2" NPT
/FL07	size 08 RF/B1	Mat. 316(L); unplugged	1 x 1/4" NPT
/FL08	size 08 RF/B1	Mat. 316(L); unplugged	1 x 1/2" NPT
/FL09	size 10 RF/B1	Mat. 316(L); unplugged	1 x 1/4" NPT
/FL10	size 10 RF/B1	Mat. 316(L); unplugged	1 x 1/2" NPT
/F21	Second flush port 1/4" NPTf		
/F22	Second flush port 1/2" NPTf		
/FLV1	Vent plugs 1/4"		
/FLV2	Vent plugs 1/2"		
/FLP1	Blind plugs 1/4"		
/FLP2	Blind plugs 1/2"		
/FV91	Pair flush valves BDTV911 - std		for 1/4" ports (fitted)
/FV92	Pair flush valves BDTV911 - std		for 1/2" ports (fitted)
/FV93	Single flush valve BDTV911 - std		for 1/4" port (fitted)
/FV94	Single flush valve BDTV911 - std		for 1/2" port (fitted)

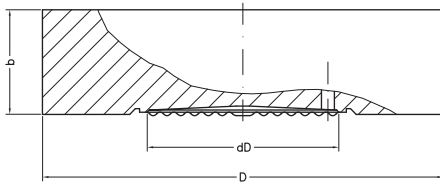
11. Options

/N5	EJX/EJA100/300/400 + W / N5 option Low volume covers by Yokogawa		
/FW	Full welded construction	recommended for vacuum service	
/DM1	Extended Direct mount (80 mm)	(temp reduction <100°C)	
/DM2	Extended Direct mount (150 mm)	(temp reduction <175°C)	
/TR	Temperature reducer	(temp reduction <225°C)	
/IC1	Capillary ID 1 mm. / 0,04"		
/BS6	Black sleeve on capillary ≤ 6 m.		
/BS15	Black sleeve on capillary > 6 ≤ 15 m.		
/LH	Lifting handles (recomm.for ≥ cl. 900)		
/K1	Degreasing Treatment I + certificate		
/K2	Degreasing Treatment (applicable F2 fill) + certificate		
/NACE	NACE MR01-75 / ISO15156 standards (latest ed.) compliance		
/BAS	Basecal performance calculation		per tag
/DP	Dye penetrant test pressurized welds + certificate		per tag

Flush ring

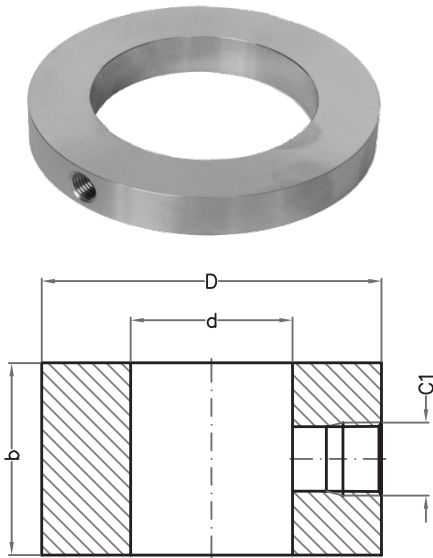


Diaphragm Seal BC flush diaphragm, flanged type



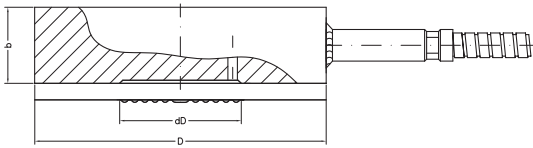
1. Model				
EJAM	EJA100, 300 & 400 Series			
EJXM	EJX100, 300 & 400 Series			
TXCM	EJA-E100, 300 & 400 Series			
EJAP	EJA130 & 440Series			
EJXP	EJX130 & 440Series			
TXCP	EJA-E130 & 440Series			
EJAD	EJA500 Series			(preferred connection "4" / WN)
EJXD	EJX500 & 600 Series			(preferred connection "4" / WN)
TXCD	EJA-E500 Series			(preferred connection "4" / WN)
2. Seal type				
DFS-BC	Diaphragm Seal - Blind flange, Raised Face			
3. Mounting				
WN5	EJAM with N5 / EJXM / TXCM with W option =/N5 mandatory option			
XN5	EJAD / EJXD / TXCD no N5 / W available			
4. Flange Size & Rating				
05A1	2"	cl. 150-2500 RF		acc. ASME B16.5
08A1	3"	cl. 150-2500 RF		acc. ASME B16.5
10A1	4"	cl. 150-2500 RF		acc. ASME B16.5
05D1	DN50	PN10-400		form B1 acc. EN 1092-1
08D1	DN80	PN10-400		form B1 acc. EN 1092-1
10D1	DN100	PN10-400		form B1 acc. EN 1092-1
5. Flange Material				
SS	SS AISI 316(L)			
6. Diaphragm Material				
SS	SS AISI 316(L)			
HC	Hastelloy C276			
DU	Duplex 2205			
A1	25 µm gold (24 Crt)	size 05		on diaphragm
A2	40 µm gold (24 Crt)	size 05		on wetted parts
A3	25 µm gold (24 Crt)	size 08		on diaphragm
A4	40 µm gold (24 Crt)	size 08		on wetted parts
PF	Coating PFA	(+/- 40 µm thickness)		(anti-stick only)
PT	Coating PTFE	(+/- 35 µm thickness)		(anti-stick only)
7. Fill Fluid				
-F1	BSO-42	Silicon Oil	-20/+350°C	-4/+662°F
-F2	BSO-25	Fluorinated Oil	-40/+250°C	-40/+482°F
-F3	BSO-22	Silicon Oil	-50/+200°C	-58/+392°F
-F4	BSO-40	FDA approved	-15/+225°C	+5/+437°F
-F5	BSO-02	Silicon Oil	-40/+400°C	-40/+752°F
-F6	BSO-03	Fluorinated Oil	-80/+100°C	-112/+212°F
-F7	BSO-18	Silicon Oil	-10/+315°C	+14/+599°F
-F8	BSO-21	Silicon Oil	-40/+315°C	-40/+599°F
-F9	BSO-41	Silicon Oil	-80/+120°C	-112/+248°F
-F0	BSO-48	Silicon Oil	-20/+410(420)°C	-4/+770(788)°F
8. Capillary Size / Type (AISI 316 Stainless Steel Armoured)				
C2	Capillary (2mm ID)			radial
9. Capillary Length				
01	1 m	3 ft		
1A	1,5 m	5 ft		
02	2 m	6 ft		
03	3 m	10 ft		
04	4 m	13 ft		
05	5 m	15 ft		
06	6 m	20 ft		
07	7 m	23 ft		
08	8 m	25 ft		
09	9 m	30 ft		
10	10 m	33 ft		
11	11 m	35 ft		
12	12 m	40 ft		
13	13 m	43 ft		
14	14 m	45 ft		
15	15 m	50 ft		
ZZ	User-defined, per m / ft			

Flush ring



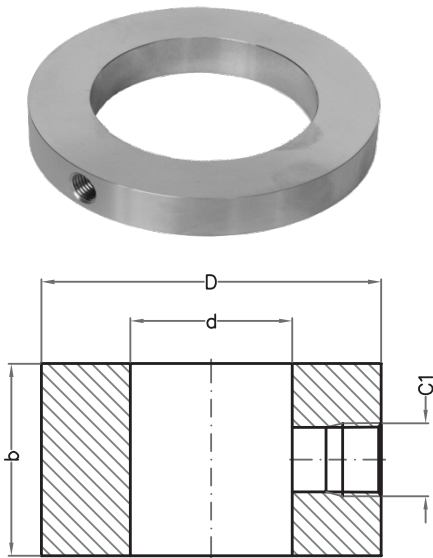
10. Flush rings in AISI 316(L)			
/FL01	size 02 RF/B1	Mat. 316(L); unplugged	1 x 1/4" NPT
/FL02	size 02 RF/B1	Mat. 316(L); unplugged	1 x 1/2" NPT
/FL03	size 04 RF/B1	Mat. 316(L); unplugged	1 x 1/4" NPT
/FL04	size 04 RF/B1	Mat. 316(L); unplugged	1 x 1/2" NPT
/FL05	size 05 RF/B1	Mat. 316(L); unplugged	1 x 1/4" NPT
/FL06	size 05 RF/B1	Mat. 316(L); unplugged	1 x 1/2" NPT
/FL07	size 08 RF/B1	Mat. 316(L); unplugged	1 x 1/4" NPT
/FL08	size 08 RF/B1	Mat. 316(L); unplugged	1 x 1/2" NPT
/FL09	size 10 RF/B1	Mat. 316(L); unplugged	1 x 1/4" NPT
/FL10	size 10 RF/B1	Mat. 316(L); unplugged	1 x 1/2" NPT
/F21	Second flush port 1/4" NPTf		
/F22	Second flush port 1/2" NPTf		
/FLV1	Vent plugs 1/4"		
/FLV2	Vent plugs 1/2"		
/FLP1	Blind plugs 1/4"		
/FLP2	Blind plugs 1/2"		
/FV91	Pair flush valves BDTV911 - std		for 1/4" ports (fitted)
/FV92	Pair flush valves BDTV911 - std		for 1/2" ports (fitted)
/FV93	Single flush valve BDTV911 - std		for 1/4" port (fitted)
/FV94	Single flush valve BDTV911 - std		for 1/2" port (fitted)
11. Options			
/N5	EJX/EJA100/300/400 + W / N5 option Low volume covers by Yokogawa		
/FW	Full welded construction		recommended for vacuum service
/IC1	Capillary ID 1 mm. / 0,04"		
/BS6	Black sleeve on capillary ≤ 6 m.		
/BS15	Black sleeve on capillary > 6 ≤ 15 m.		
/K1	Degreasing Treatment I + certificate		
/K2	Degreasing Treatment (applicable F2 fill) + certificate		
/NACE	NACE MR01-75 / ISO15156 standards (latest ed.) compliance		
/BAS	Basecal performance calculation		per tag
/DP	Dye penetrant test pressurized welds + certificate		per tag

Diaphragm Seal BRC flush diaphragm, flanged type



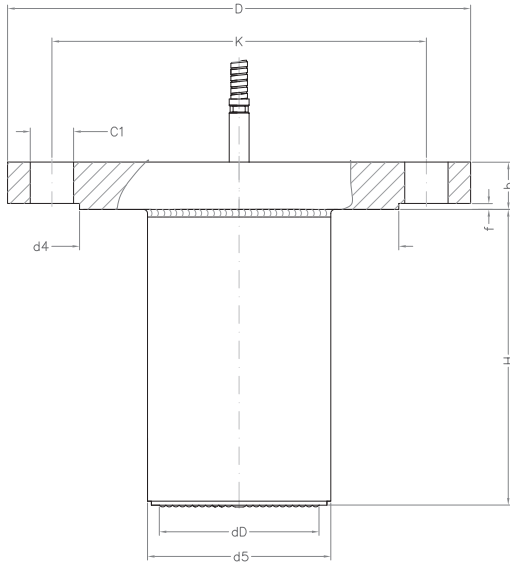
1. Model				
EJAM	EJA100, 300 & 400 Series			
EJXM	EJX100, 300 & 400 Series			
TXCM	EJA-E100, 300 & 400 Series			
EJAP	EJA130 & 440Series			
EJXP	EJX130 & 440Series			
TXCP	EJA-E130 & 440Series			
EJAD	EJA500 Series	(preferred connection "4" / WN)		
EJXD	EJX500 & 600 Series	(preferred connection "4" / WN)		
TXCD	EJA-E500 Series	(preferred connection "4" / WN)		
2. Seal type				
DFS-BRC	Diaphragm Seal - Blind flange, Raised Face			
3. Mounting				
WN5	EJAM with N5 / EJXM / TXCM with W option =/N5 mandatory option			
XN5	EJAD / EJXD / TXCD no N5 / W available			
4. Flange Size & Rating				
05A1	2"	cl. 150-2500 RF	acc. ASME B16.5	
08A1	3"	cl. 150-2500 RF	acc. ASME B16.5	
10A1	4"	cl. 150-2500 RF	acc. ASME B16.5	
05D1	DN50	PN10-400	form B1 acc. EN 1092-1	
08D1	DN80	PN10-400	form B1 acc. EN 1092-1	
10D1	DN100	PN10-400	form B1 acc. EN 1092-1	
5. Flange Material				
SS	SS AISI 316(L)			
6. Wetted parts material (Diaphragm Material & Raised face covered)				
HB	Hastelloy B2			
HC	Hastelloy C276			
I6	Inconel 600			
DU	Duplex 2205			
SD	Super Duplex 2507			
M4	Monel 400			
N2	Nickel 201			
TA	Tantalum			
S4	AISI304L			
S2	AISI321			
7. Fill Fluid				
-F1	BSO-42	Silicon Oil	-20/+350°C	-4/+662°F
-F2	BSO-25	Fluorinated Oil	-40/+250°C	-40/+482°F
-F3	BSO-22	Silicon Oil	-50/+200°C	-58/+392°F
-F4	BSO-40	FDA approved	-15/+225°C	+5/+437°F
-F5	BSO-02	Silicon Oil	-40/+400°C	-40/+752°F
-F6	BSO-03	Fluorinated Oil	-80/+100°C	-112/+212°F
-F7	BSO-18	Silicon Oil	-10/+315°C	+14/+599°F
-F8	BSO-21	Silicon Oil	-40/+315°C	-40/+599°F
-F9	BSO-41	Silicon Oil	-80/+120°C	-112/+248°F
-F0	BSO-48	Silicon Oil	-20/+410(420)°C	-4/+770(788)°F
8. Capillary Size / Type (AISI 316 Stainless Steel Armoured)				
C2	Capillary (2mm ID)		radial	
9. Capillary Length				
01	1 m	3 ft		
1A	1,5 m	5 ft		
02	2 m	6 ft		
03	3 m	10 ft		
04	4 m	13 ft		
05	5 m	15 ft		
06	6 m	20 ft		
07	7 m	23 ft		
08	8 m	25 ft		
09	9 m	30 ft		
10	10 m	33 ft		
11	11 m	35 ft		
12	12 m	40 ft		
13	13 m	43 ft		
14	14 m	45 ft		
15	15 m	50 ft		
ZZ	User-defined, per m / ft			

Flush ring



10. Flush rings in AISI 316(L)			
/FL01	size 02 RF/B1	Mat. 316(L); unplugged	1 x 1/4" NPT
/FL02	size 02 RF/B1	Mat. 316(L); unplugged	1 x 1/2" NPT
/FL03	size 04 RF/B1	Mat. 316(L); unplugged	1 x 1/4" NPT
/FL04	size 04 RF/B1	Mat. 316(L); unplugged	1 x 1/2" NPT
/FL05	size 05 RF/B1	Mat. 316(L); unplugged	1 x 1/4" NPT
/FL06	size 05 RF/B1	Mat. 316(L); unplugged	1 x 1/2" NPT
/FL07	size 08 RF/B1	Mat. 316(L); unplugged	1 x 1/4" NPT
/FL08	size 08 RF/B1	Mat. 316(L); unplugged	1 x 1/2" NPT
/FL09	size 10 RF/B1	Mat. 316(L); unplugged	1 x 1/4" NPT
/FL10	size 10 RF/B1	Mat. 316(L); unplugged	1 x 1/2" NPT
/F21	Second flush port 1/4" NPTf		
/F22	Second flush port 1/2" NPTf		
/FLV1	Vent plugs 1/4"		
/FLV2	Vent plugs 1/2"		
/FLP1	Blind plugs 1/4"		
/FLP2	Blind plugs 1/2"		
/FV91	Pair flush valves BDTV911 - std		for 1/4" ports (fitted)
/FV92	Pair flush valves BDTV911 - std		for 1/2" ports (fitted)
/FV93	Single flush valve BDTV911 - std		for 1/4" port (fitted)
/FV94	Single flush valve BDTV911 - std		for 1/2" port (fitted)
11. Options			
/N5	EJX/EJA100/300/400 + W / N5 option	Low volume covers by Yokogawa	
/FW	Full welded construction	recommended for vacuum service	
/IC1	Capillary ID 1 mm. / 0,04"		
/BS6	Black sleeve on capillary ≤ 6 m.		
/BS15	Black sleeve on capillary > 6 ≤ 15 m.		
/K1	Degreasing Treatment I + certificate		
/K2	Degreasing Treatment (applicable F2 fill) + certificate		
/NACE	NACE MR01-75 / ISO15156 standards (latest ed.) compliance		
/BAS	Basecal performance calculation		per tag
/DP	Dye penetrant test pressurized welds + certificate		per tag

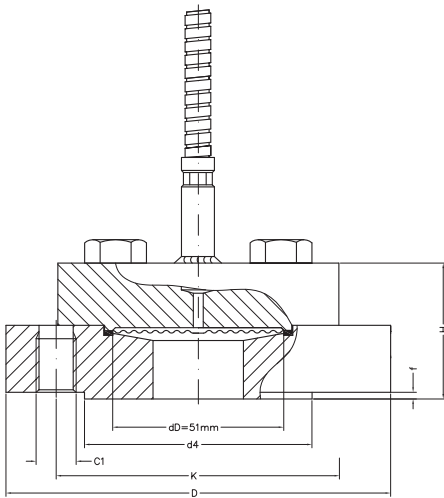
Diaphragm Seal EXT flush diaphragm, flanged type



1. Model			
EJAM	EJA100, 300 & 400 Series		
EJXM	EJX100, 300 & 400 Series		
TXCM	EJA-E100, 300 & 400 Series		
EJAP	EJA130 & 440Series		
EJXP	EJX130 & 440Series		
TXCP	EJA-E130 & 440Series		
EJAD	EJA500 Series	(preferred connection "4" / WN)	
EJXD	EJX500 & 600 Series	(preferred connection "4" / WN)	
TXCD	EJA-E500 Series	(preferred connection "4" / WN)	
2. Seal type			
DFS-EXT	Diaphragm Seal - Extended, Flush Diaphragm, Flanged type		
3. Mounting			
WN5	EJAM with N5 / EJXM / TXCM with W option =/N5 mandatory option		
XN5	EJAD / EJXD / TXCD no N5 / W available		
4. Flange Size & Rating			
05A1	2"	cl. 150 RF	acc. ASME B16.5
05A2	2"	cl. 300 RF	acc. ASME B16.5
05A4	2"	cl. 600 RF	acc. ASME B16.5
05A6	2"	cl. 1500 RF	acc. ASME B16.5
05A7	2"	cl. 2500 RF	acc. ASME B16.5
08A1	3"	cl. 150 RF	acc. ASME B16.5
08A2	3"	cl. 300 RF	acc. ASME B16.5
08A4	3"	cl. 600 RF	acc. ASME B16.5
08A5	3"	cl. 900 RF	acc. ASME B16.5
08A6	3"	cl. 1500 RF	acc. ASME B16.5
08A7	3"	cl. 2500 RF	acc. ASME B16.5
10A1	4"	cl. 150 RF	acc. ASME B16.5
10A2	4"	cl. 300 RF	acc. ASME B16.5
05D4	DN50	PN10-40	form B1 acc. EN 1092-1
08D4	DN80	PN10-40	form B1 acc. EN 1092-1
10D2	DN100	PN10-16	form B1 acc. EN 1092-1
10D4	DN100	PN25-40	form B1 acc. EN 1092-1
5. Flange Material			
SS	SS AISI 316(L)		
6. Extension length			
-050	Extension Ø 48, length 50 mm / 2" size 05		
-100	Extension Ø 48, length 100 mm / 4" size 05		
-150	Extension Ø 48, length 150 mm / 6" size 05		
-200	Extension Ø 48, length 200 mm / 8" size 05		
-250	Extension Ø 48, length 250 mm / 10" size 05		
-051	Extension Ø 76, length 50 mm / 2" size 08		
-101	Extension Ø 76, length 100 mm / 4" size 08		
-151	Extension Ø 76, length 150 mm / 6" size 08		
-201	Extension Ø 76, length 200 mm / 8" size 08		
-251	Extension Ø 76, length 250 mm / 10" size 08		
-052	Extension Ø 93, length 50 mm / 2" size 10		
-102	Extension Ø 93, length 100 mm / 4" size 10		
-152	Extension Ø 93, length 150 mm / 6" size 10		
-202	Extension Ø 93, length 200 mm / 8" size 10		
-252	Extension Ø 93, length 250 mm / 10" size 10		
7. Diaphragm Material			
SS	SS AISI 316(L)		
HC	Hastelloy C276		
DU	Duplex 2205		
M4	Monel 400		

8. Fill Fluid				
-F1	BSO-42	Silicon Oil	-20/+350°C	-4/+662°F
-F2	BSO-25	Fluorinated Oil	-40/+250°C	-40/+482°F
-F3	BSO-22	Silicon Oil	-50/+200°C	-58/+392°F
-F4	BSO-40	FDA approved	-15/+225°C	+5/+437°F
-F5	BSO-02	Silicon Oil	-40/+400°C	-40/+752°F
-F6	BSO-03	Fluorinated Oil	-80/+100°C	-112/+212°F
-F7	BSO-18	Silicon Oil	-10/+315°C	+14/+599°F
-F8	BSO-21	Silicon Oil	-40/+315°C	-40/+599°F
-F9	BSO-41	Silicon Oil	-80/+120°C	-112/+248°F
-F0	BSO-48	Silicon Oil	-20/+410(420)°C	-4/+770(788)°F
9. Capillary Size / Type (AISI 316 Stainless Steel Armoured)				
NN	Direct coupled / Welded (No Capillary)			
C1	Capillary (2mm ID)		axial	
10. Capillary Length				
NN	Direct coupled / Welded (No Capillary)			
O1	1 m		3 ft	
1A	1,5 m		5 ft	
O2	2 m		6 ft	
O3	3 m		10 ft	
O4	4 m		13 ft	
O5	5 m		15 ft	
O6	6 m		20 ft	
O7	7 m		23 ft	
O8	8 m		25 ft	
O9	9 m		30 ft	
10	10 m		33 ft	
11	11 m		35 ft	
12	12 m		40 ft	
13	13 m		43 ft	
14	14 m		45 ft	
15	15 m		50 ft	
ZZ	User-defined, per m / ft			
11. Options				
/N5	EJX/EJA100/300/400 + W / N5 option Low volume covers by Yokogawa			
/FW	Full welded construction		recommended for vacuum service	
/DM1	Extended Direct mount (80 mm)		(temp reduction <100°C)	
/DM2	Extended Direct mount (150 mm)		(temp reduction <175°C)	
/TR	Temperature reducer		(temp reduction <225°C)	
/IC1	Capillary ID 1 mm. / 0,04"			
/BS6	Black sleeve on capillary ≤ 6 m.			
/BS15	Black sleeve on capillary > 6 ≤ 15 m.			
/LH	Lifting handles (recomm.for ≥ cl. 900)			
/K1	Degreasing Treatment I + certificate			
/K2	Degreasing Treatment (applicable F2 fill) + certificate			
/NACE	NACE MR01-75 / ISO15156 standards (latest ed.) compliance			
/BAS	Basical performance calculation report			per tag
/DP	Dye penetrant test pressurized welds + certificate			per tag

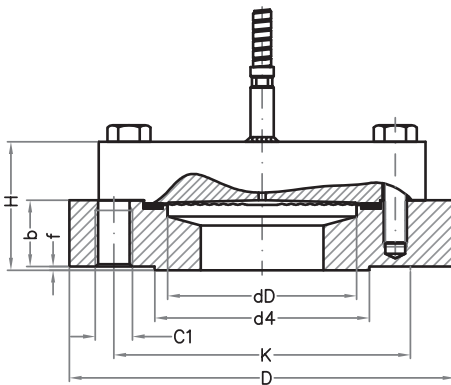
**Diaphragm Seal US-F
internal diaphragm,
flanged type**



1. Model				
EJAM	EJA100, 300 & 400 Series			
EJXM	EJX100, 300 & 400 Series			
TXCM	EJA-E100, 300 & 400 Series			
EJAP	EJA130 & 440Series			
EJXP	EJX130 & 440Series			
TXCP	EJA-E130 & 440Series			
EJAD	EJA500 Series			(preferred connection "4" / WN)
EJXD	EJX500 & 600 Series			(preferred connection "4" / WN)
TXCD	EJA-E500 Series			(preferred connection "4" / WN)
2. Seal type				
DFS-USF	Diaphragm Seal - Internal Diaphragm, Flanged type			
3. Mounting				
WN5	EJAM with N5 / EJXM / TXCM with W option =/N5 mandatory option			
XN5	EJAD / EJXD / TXCD no N5 / W available			
4. Flange Size & Rating				
01A1	1/2"	cl. 150 RF		acc. ASME B16.5
01A2	1/2"	cl. 300 RF		acc. ASME B16.5
01A4	1/2"	cl. 600 RF		acc. ASME B16.5
01A6	1/2"	cl. 1500 RF		acc. ASME B16.5
1AA1	3/4"	cl. 150 RF		acc. ASME B16.5
1AA2	3/4"	cl. 300 RF		acc. ASME B16.5
1AA4	3/4"	cl. 600 RF		acc. ASME B16.5
1AA6	3/4"	cl. 1500 RF		acc. ASME B16.5
02A1	1"	cl. 150 RF		acc. ASME B16.5
02A2	1"	cl. 300 RF		acc. ASME B16.5
02A4	1"	cl. 600 RF		acc. ASME B16.5
02A6	1"	cl. 1500 RF		acc. ASME B16.5
04A1	1,5"	cl. 150 RF		acc. ASME B16.5
04A2	1,5"	cl. 300 RF		acc. ASME B16.5
04A4	1,5"	cl. 600 RF		acc. ASME B16.5
04A6	1,5"	cl. 1500 RF		acc. ASME B16.5
01D4	DN15	PN10-40		form B1 acc. EN 1092-1
01D5	DN15	PN63		form B1 acc. EN 1092-1
01D6	DN15	PN100		form B1 acc. EN 1092-1
02D4	DN25	PN10-40		form B1 acc. EN 1092-1
02D5	DN25	PN63		form B1 acc. EN 1092-2
02D6	DN25	PN100		form B1 acc. EN 1092-3
04D4	DN40	PN10-40		form B1 acc. EN 1092-1
04D5	DN40	PN63		form B1 acc. EN 1092-1
04D6	DN40	PN100		form B1 acc. EN 1092-1
5. Lower part material				
SS	SS AISI 316(L)			
6. Diaphragm Material				
SS	Stainless Steel AISI 316 L			
HB	Hastelloy B2			
HC	Hastelloy C276			
DU	Duplex 2205			
I6	Inconel 600			
M4	Monel 400			
N2	Nickel 201			
TA	Tantalum			
SD	Super Duplex 2507			
S4	AISI304L			
S2	AISI321			
PT	Coating PTFE (anti-stick only) (+/- 35 µm thickness) (anti-stick only)			
7. Fill Fluid				
-F1	BSO-42	Silicon Oil	-20/+350°C	-4/+662°F
-F2	BSO-25	Fluorinated Oil	-40/+250°C	-40/+482°F
-F3	BSO-22	Silicon Oil	-50/+200°C	-58/+392°F
-F4	BSO-40	FDA approved	-15/+225°C	+5/+437°F
-F5	BSO-02	Silicon Oil	-40/+400°C	-40/+752°F
-F6	BSO-03	Fluorinated Oil	-80/+100°C	-112/+212°F
-F7	BSO-18	Silicon Oil	-10/+315°C	+14/+599°F
-F8	BSO-21	Silicon Oil	-40/+315°C	-40/+599°F
-F9	BSO-41	Silicon Oil	-80/+120°C	-112/+248°F
-F0	BSO-48	Silicon Oil	-20/+410(420)°C	-4/+770(788)°F

8. Capillary Size / Type (AISI 316 Stainless Steel Armoured)			
NN	Direct coupled / Welded (No Capillary)		
C1	Capillary (2mm ID)	axial	
9. Capillary Length			
NN	Direct coupled / Welded (No Capillary)		
01	1 m	3 ft	
1A	1,5 m	5 ft	
02	2 m	6 ft	
03	3 m	10 ft	
04	4 m	13 ft	
05	5 m	15 ft	
06	6 m	20 ft	
07	7 m	23 ft	
08	8 m	25 ft	
09	9 m	30 ft	
10	10 m	33 ft	
11	11 m	35 ft	
12	12 m	40 ft	
13	13 m	43 ft	
14	14 m	45 ft	
15	15 m	50 ft	
ZZ	User-defined, per m / ft		
10. Flush connections lower part			
/FR01	Flush port	Unplugged	1 x 1/4" NPT
/FR02	Flush port	Unplugged	2 x 1/4" NPT
/FR03	Flush port	Vent plug	1 x 1/4" NPT
/FR04	Flush port	Vent plug	2 x 1/4" NPT
/FR05	Flush port	Blind plugs	1 x 1/4" NPT
/FR06	Flush port	Blind plugs	2 x 1/4" NPT
/FV90	Pair flush valves BDTV910 - std		for 1/4" ports (fitted)
/FV91	Single flush valve BDTV910 - std		for 1/4" port (fitted)
11. Options			
/N5	EJX/EJA100/300/400 + W / N5 option Low volume covers by Yokogawa		
/FW	Full welded construction	recommended for vacuum service	
/DM1	Extended Direct mount (80 mm)	(temp reduction <100°C)	
/DM2	Extended Direct mount (150 mm)	(temp reduction <175°C)	
/TR	Temperature reducer	(temp reduction <225°C)	
/IC1	Capillary ID 1 mm. / 0,04"		
/BS6	Black sleeve on capillary ≤ 6 m.		
/BS15	Black sleeve on capillary > 6 ≤ 15 m.		
/K1	Degreasing Treatment I + certificate		
/K2	Degreasing Treatment (applicable F2 fill) + certificate		
/NACE	NACE MR01-75 / ISO15156 standards (latest ed.) compliance		
/BAS	Basecal performance calculation report	per tag	
/DP	Dye penetrant test pressurized welds + certificate	per tag	
/LMF	Large Male Facing	acc. ASME B16.5	
/SMF	Small Male Facing	acc. ASME B16.5	
/FF	Flat Facing	acc. ASME B16.5	
/LTF	Large Tongue	acc. ASME B16.5	
/STF	Small Tongue Facing	acc. ASME B16.5	
/LGF	Large Groove Facing	acc. ASME B16.5	
/SGF	Small Groove Facing	acc. ASME B16.5	
/LFF	Large Female Facing	acc. ASME B16.5	
/SFF	Small Female Facing	acc. ASME B16.5	
/RJF	Ring Joint Facing	acc. ASME B16.5	
/A	Form A	acc. EN1092-1	
/B2	Form B2	acc. EN1092-1	
/C	Form C	acc. EN1092-1	
/D	Form D	acc. EN1092-1	
/E	Form E	acc. EN1092-1	
/F	Form F	acc. EN1092-1	
/G	Form G	acc. EN1092-1	
/H	Form H	acc. EN1092-1	

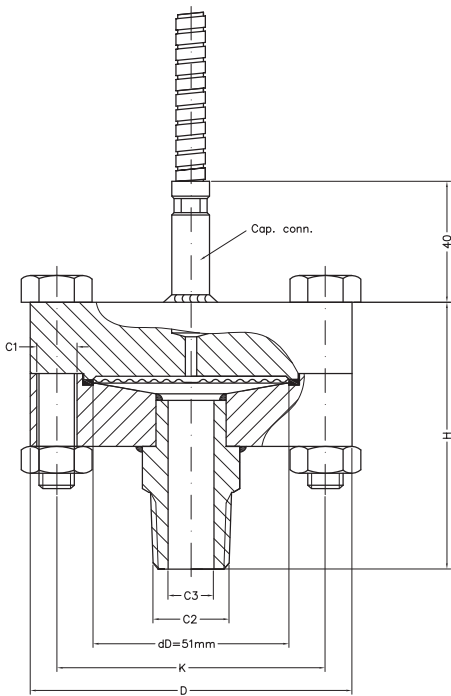
Diaphragm Seal USL-F Internal diaphragm, Flanged type



1. Model				
EJAM	EJA100, 300 & 400 Series			
EJXM	EJX100, 300 & 400 Series			
TXCM	EJA-E100, 300 & 400 Series			
EJAP	EJA130 & 440Series			
EJXP	EJX130 & 440Series			
TXCP	EJA-E130 & 440Series			
EJAD	EJA500 Series (preferred connection "4" / WN)			
EJXD	EJX500 & 600 Series		(preferred connection "4" / WN)	
TXCD	EJA-E500 Series		(preferred connection "4" / WN)	
2. Seal type				
DFS-USL-F	Diaphragm Seal - Internal Diaphragm, Flanged type			
3. Mounting				
WN5	EJAM with N5 / EJXM / TXCM with W option =/N5 mandatory option			
XN5	EJAD / EJXD / TXCD no N5 / W available			
4. Flange Size & Rating				
01A1	1/2"	cl. 150 RF	acc. ASME B16.5	
01A2	1/2"	cl. 300 RF	acc. ASME B16.5	
01A4	1/2"	cl. 600 RF	acc. ASME B16.5	
1AA1	3/4"	cl. 150 RF	acc. ASME B16.5	
1AA2	3/4"	cl. 300 RF	acc. ASME B16.5	
1AA4	3/4"	cl. 600 RF	acc. ASME B16.5	
02A1	1"	cl. 150 RF	acc. ASME B16.5	
02A2	1"	cl. 300 RF	acc. ASME B16.5	
02A4	1"	cl. 600 RF	acc. ASME B16.5	
04A1	1,5"	cl. 150 RF	acc. ASME B16.5	
04A2	1,5"	cl. 300 RF	acc. ASME B16.5	
04A4	1,5"	cl. 600 RF	acc. ASME B16.5	
05A1	2"	cl. 150 RF	acc. ASME B16.5	
05A2	2"	cl. 300 RF	acc. ASME B16.5	
05A4	2"	cl. 600 RF	acc. ASME B16.5	
01D4	DN15	PN10-40	form B1 acc. EN 1092-1	
01D5	DN15	PN63	form B1 acc. EN 1092-1	
01D6	DN15	PN100	form B1 acc. EN 1092-1	
02D4	DN25	PN10-40	form B1 acc. EN 1092-1	
02D5	DN25	PN63	form B1 acc. EN 1092-2	
02D6	DN25	PN100	form B1 acc. EN 1092-3	
04D4	DN40	PN10-40	form B1 acc. EN 1092-1	
04D5	DN40	PN63	form B1 acc. EN 1092-1	
04D6	DN40	PN100	form B1 acc. EN 1092-1	
05D4	DN50	PN10-40	form B1 acc. EN 1092-1	
05D5	DN50	PN63	form B1 acc. EN 1092-1	
05D6	DN50	PN100	form B1 acc. EN 1092-1	
5. Lower part material				
SS	SS AISI 316(L)			
6. Diaphragm Material				
SS	Stainless Steel AISI 316 L			
HB	Hastelloy B2			
HC	Hastelloy C276			
DU	Duplex 2205			
I6	Inconel 600			
M4	Monel 400			
N2	Nickel 201			
TA	Tantalum			
SD	Super Duplex 2507			
S4	AISI304L			
S2	AISI321			
PT	Coating PTFE (anti-stick only) (+/- 35 µm thickness) (anti-stick only)			
7. Fill Fluid				
-F1	BSO-42	Silicon Oil	-20/+350°C	-4/+662°F
-F2	BSO-25	Fluorinated Oil	-40/+250°C	-40/+482°F
-F3	BSO-22	Silicon Oil	-50/+200°C	-58/+392°F
-F4	BSO-40	FDA approved	-15/+225°C	+5/+437°F
-F5	BSO-02	Silicon Oil	-40/+400°C	-40/+752°F
-F6	BSO-03	Fluorinated Oil	-80/+100°C	-112/+212°F
-F7	BSO-18	Silicon Oil	-10/+315°C	+14/+599°F
-F8	BSO-21	Silicon Oil	-40/+315°C	-40/+599°F
-F9	BSO-41	Silicon Oil	-80/+120°C	-112/+248°F
-F0	BSO-48	Silicon Oil	-20/+410(420)°C	-4/+770(788)°F

8. Capillary Size / Type (AISI 316 Stainless Steel Armoured)			
NN	Direct coupled / Welded (No Capillary)		
C1	Capillary (2mm ID)	axial	
9. Capillary Length			
NN	Direct coupled / Welded (No Capillary)		
01	1 m	3 ft	
1A	1,5 m	5 ft	
02	2 m	6 ft	
03	3 m	10 ft	
04	4 m	13 ft	
05	5 m	15 ft	
06	6 m	20 ft	
07	7 m	23 ft	
08	8 m	25 ft	
09	9 m	30 ft	
10	10 m	33 ft	
11	11 m	35 ft	
12	12 m	40 ft	
13	13 m	43 ft	
14	14 m	45 ft	
15	15 m	50 ft	
ZZ	User-defined, per m / ft		
10. Flush connections lower part			
/FR01	Flush port	Unplugged	1 x 1/4" NPT
/FR02	Flush port	Unplugged	2 x 1/4" NPT
/FR03	Flush port	Vent plug	1 x 1/4" NPT
/FR04	Flush port	Vent plug	2 x 1/4" NPT
/FR05	Flush port	Blind plugs	1 x 1/4" NPT
/FR06	Flush port	Blind plugs	2 x 1/4" NPT
/FV90	Pair flush valves BDTV910 - std		for 1/4" ports (fitted)
/FV91	Single flush valve BDTV910 - std		for 1/4" port (fitted)
11. Options			
/N5	EJX/EJA100/300/400 + W / N5 option Low volume covers by Yokogawa		
/FW	Full welded construction	recommended for vacuum service	
/DM1	Extended Direct mount (80 mm)	(temp reduction <100°C)	
/DM2	Extended Direct mount (150 mm)	(temp reduction <175°C)	
/TR	Temperature reducer	(temp reduction <225°C)	
/IC1	Capillary ID 1 mm. / 0,04"		
/BS6	Black sleeve on capillary ≤ 6 m.		
/BS15	Black sleeve on capillary > 6 ≤ 15 m.		
/K1	Degreasing Treatment I + certificate		
/K2	Degreasing Treatment (applicable F2 fill) + certificate		
/NACE	NACE MR01-75 / ISO15156 standards (latest ed.) compliance		
/BAS	Basecal performance calculation report	per tag	
/DP	Dye penetrant test pressurized welds + certificate	per tag	
/LMF	Large Male Facing	acc. ASME B16.5	
/SMF	Small Male Facing	acc. ASME B16.5	
/FF	Flat Facing	acc. ASME B16.5	
/LTF	Large Tongue	acc. ASME B16.5	
/STF	Small Tongue Facing	acc. ASME B16.5	
/LGF	Large Groove Facing	acc. ASME B16.5	
/SGF	Small Groove Facing	acc. ASME B16.5	
/LFF	Large Female Facing	acc. ASME B16.5	
/SFF	Small Female Facing	acc. ASME B16.5	
/RJF	Ring Joint Facing	acc. ASME B16.5	
/A	Form A	acc. EN1092-1	
/B2	Form B2	acc. EN1092-1	
/C	Form C	acc. EN1092-1	
/D	Form D	acc. EN1092-1	
/E	Form E	acc. EN1092-1	
/F	Form F	acc. EN1092-1	
/G	Form G	acc. EN1092-1	
/H	Form H	acc. EN1092-1	

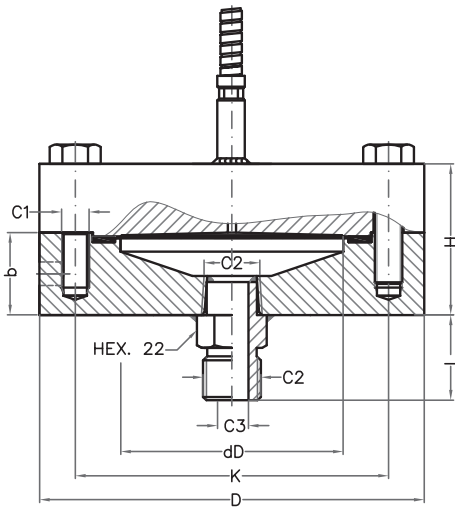
Diaphragm Seal US-T Internal diaphragm, Threaded type



1. Model				
EJAM	EJA100, 300 & 400 Series			
EJXM	EJX100, 300 & 400 Series			
TXCM	EJA-E100, 300 & 400 Series			
EJAP	EJA130 & 440Series			
EJXP	EJX130 & 440Series			
TXCP	EJA-E130 & 440Series			
EJAD	EJA500 Series	(preferred connection "4" / WN)		
EJXD	EJX500 & 600 Series	(preferred connection "4" / WN)		
TXCD	EJA-E500 Series	(preferred connection "4" / WN)		
2. Seal type				
DFS-UST	Diaphragm Seal - Internal Diaphragm, Threaded			
3. Mounting				
WN5	EJAM with N5 / EJXM / TXCM with W option =/N5 mandatory option			
XN5	EJAD / EJXD / TXCD no N5 / W available			
4. Thread & Form				
T1NF	1/4"	NPT female		
T2NF	1/2"	NPT female		
T3NF	3/4"	NPT female		
T4NF	1"	NPT female		
T1NM	1/4"	NPT male		
T2NM	1/2"	NPT male		
T3NM	3/4"	NPT male		
T4NM	1"	NPT male		
T1BM	1/4"	ISO 228 male		
T2BM	1/2"	ISO 228 male		
T3BM	3/4"	ISO 228 male		
T4BM	1"	ISO 228 male		
T1BF	1/4"	ISO 228 female		
T2BF	1/2"	ISO 228 female		
T3BF	3/4"	ISO 228 female		
T4BF	1"	ISO 228 female		
5. Lower part material				
SS	SS AISI 316(L)			
6. Diaphragm Material				
SS	Stainless Steel AISI 316 L			
HB	Hastelloy B2			
HC	Hastelloy C276			
DU	Duplex 2205			
I6	Inconel 600			
M4	Monel 400			
N2	Nickel 201			
TA	Tantalum			
SD	Super Duplex 2507			
S4	AISI304L			
S2	AISI321			
PT	Coating PTFE (anti-stick only) (+/- 35 µm thickness) (anti-stick only)			
7. Fill Fluid				
-F1	BSO-42	Silicon Oil	-20/+350°C	-4/+662°F
-F2	BSO-25	Fluorinated Oil	-40/+250°C	-40/+482°F
-F3	BSO-22	Silicon Oil	-50/+200°C	-58/+392°F
-F4	BSO-40	FDA approved	-15/+225°C	+5/+437°F
-F5	BSO-02	Silicon Oil	-40/+400°C	-40/+752°F
-F6	BSO-03	Fluorinated Oil	-80/+100°C	-112/+212°F
-F7	BSO-18	Silicon Oil	-10/+315°C	+14/+599°F
-F8	BSO-21	Silicon Oil	-40/+315°C	-40/+599°F
-F9	BSO-41	Silicon Oil	-80/+120°C	-112/+248°F
-F0	BSO-48	Silicon Oil	-20/+410(420)°C	-4/+770(788)°F

8. Capillary Size / Type (AISI 316 Stainless Steel Armoured)			
NN	Direct coupled / Welded (No Capillary)		
C1	Capillary (2mm ID)	axial	
9. Capillary Length			
NN	Direct coupled / Welded (No Capillary)		
01	1 m	3 ft	
1A	1,5 m	5 ft	
02	2 m	6 ft	
03	3 m	10 ft	
04	4 m	13 ft	
05	5 m	15 ft	
06	6 m	20 ft	
07	7 m	23 ft	
08	8 m	25 ft	
09	9 m	30 ft	
10	10 m	33 ft	
11	11 m	35 ft	
12	12 m	40 ft	
13	13 m	43 ft	
14	14 m	45 ft	
15	15 m	50 ft	
ZZ	User-defined, per m / ft		
10. Flush connections lower part			
/FR01	Flush port	Unplugged	1 x 1/4" NPT
/FR02	Flush port	Unplugged	2 x 1/4" NPT
/FR03	Flush port	Vent plug	1 x 1/4" NPT
/FR04	Flush port	Vent plug	2 x 1/4" NPT
/FR05	Flush port	Blind plugs	1 x 1/4" NPT
/FR06	Flush port	Blind plugs	2 x 1/4" NPT
/FV90	Pair flush valves BDTV910 - std		for 1/4" ports (fitted)
/FV91	Single flush valve BDTV910 - std		for 1/4" port (fitted)
11. Options			
/N5	EJX/EJA100/300/400 + W / N5 option Low volume covers by Yokogawa		
/FW	Full welded construction recommended for vacuum service		
/DM1	Extended Direct mount (80 mm)		(temp reduction <100°C)
/DM2	Extended Direct mount (150 mm)		(temp reduction <175°C)
/TR	Temperature reducer		(temp reduction <225°C)
/IC1	Capillary ID 1 mm. / 0,04"		
/BS6	Black sleeve on capillary ≤ 6 m.		
/BS15	Black sleeve on capillary > 6 ≤ 15 m.		
/K1	Degreasing Treatment I + certificate		
/K2	Degreasing Treatment II (applicable F2 fill) + certificate		
/NACE	NACE MR01-75 / ISO15156 standards (latest ed.) compliance		
/BAS	Basecal performance calculation report		per tag
/DP	Dye penetrant test pressurized welds + certificate		per tag

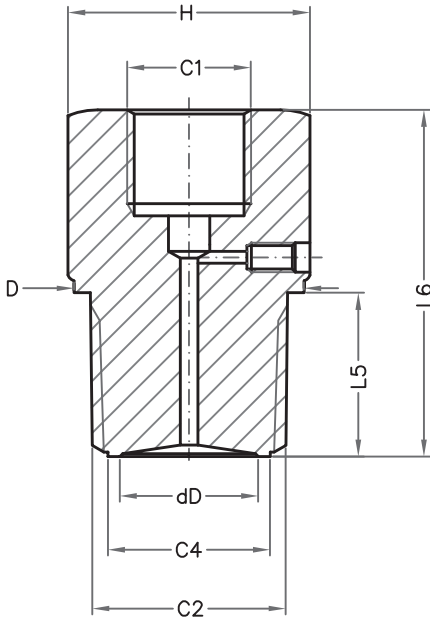
Diaphragm Seal USL-T Internal diaphragm, Threaded type



1. Model				
EJAM	EJA100, 300 & 400 Series			
EJXM	EJX100, 300 & 400 Series			
TXCM	EJA-E100, 300 & 400 Series			
EJAP	EJA130 & 440Series			
EJXP	EJX130 & 440Series			
TXCP	EJA-E130 & 440Series			
EJAD	EJA500 Series	(preferred connection "4" / WN)		
EJXD	EJX500 & 600 Series	(preferred connection "4" / WN)		
TXCD	EJA-E500 Series	(preferred connection "4" / WN)		
2. Seal type				
DFS-USL-T	Diaphragm Seal - Internal Diaphragm, Threaded			
3. Mounting				
WN5	EJAM with N5 / EJXM / TXCM with W option =/N5 mandatory option			
XN5	EJAD / EJXD / TXCD no N5 / W available			
4. Thread & Form				
T1NF	1/4"	NPT female		
T2NF	1/2"	NPT female		
T3NF	3/4"	NPT female		
T4NF	1"	NPT female		
T1NM	1/4"	NPT male		
T2NM	1/2"	NPT male		
T3NM	3/4"	NPT male		
T4NM	1"	NPT male		
T1BM	1/4"	ISO 228 male		
T2BM	1/2"	ISO 228 male		
T3BM	3/4"	ISO 228 male		
T4BM	1"	ISO 228 male		
T1BF	1/4"	ISO 228 female		
T2BF	1/2"	ISO 228 female		
T3BF	3/4"	ISO 228 female		
T4BF	1"	ISO 228 female		
5. Lower part material				
SS	SS AISI 316(L)			
6. Diaphragm Material				
SS	Stainless Steel AISI 316 L			
HB	Hastelloy B2			
HC	Hastelloy C276			
DU	Duplex 2205			
I6	Inconel 600			
M4	Monel 400			
N2	Nickel 201			
TA	Tantalum			
SD	Super Duplex 2507			
S4	AISI304L			
S2	AISI321			
PT	Coating PTFE (anti-stick only) (+/- 35 µm thickness) (anti-stick only)			
7. Fill Fluid				
-F1	BSO-42	Silicon Oil	-20/+350°C	-4/+662°F
-F2	BSO-25	Fluorinated Oil	-40/+250°C	-40/+482°F
-F3	BSO-22	Silicon Oil	-50/+200°C	-58/+392°F
-F4	BSO-40	FDA approved	-15/+225°C	+5/+437°F
-F5	BSO-02	Silicon Oil	-40/+400°C	-40/+752°F
-F6	BSO-03	Fluorinated Oil	-80/+100°C	-112/+212°F
-F7	BSO-18	Silicon Oil	-10/+315°C	+14/+599°F
-F8	BSO-21	Silicon Oil	-40/+315°C	-40/+599°F
-F9	BSO-41	Silicon Oil	-80/+120°C	-112/+248°F
-F0	BSO-48	Silicon Oil	-20/+410(420)°C	-4/+770(788)°F

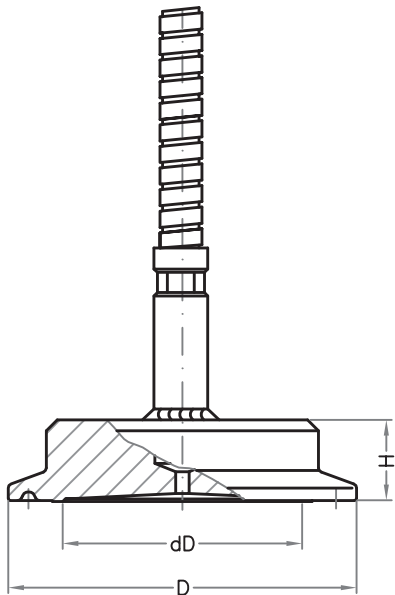
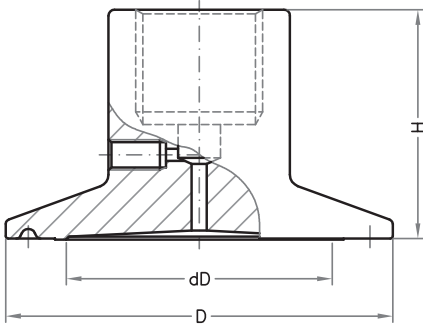
8. Capillary Size / Type (AISI 316 Stainless Steel Armoured)			
NN	Direct coupled / Welded (No Capillary)		
C1	Capillary (2mm ID)	axial	
9. Capillary Length			
NN	Direct coupled / Welded (No Capillary)		
01	1 m	3 ft	
1A	1,5 m	5 ft	
02	2 m	6 ft	
03	3 m	10 ft	
04	4 m	13 ft	
05	5 m	15 ft	
06	6 m	20 ft	
07	7 m	23 ft	
08	8 m	25 ft	
09	9 m	30 ft	
10	10 m	33 ft	
11	11 m	35 ft	
12	12 m	40 ft	
13	13 m	43 ft	
14	14 m	45 ft	
15	15 m	50 ft	
ZZ	User-defined, per m / ft		
10. Flush connections lower part			
/FR01	Flush port	Unplugged	1 x 1/4" NPT
/FR02	Flush port	Unplugged	2 x 1/4" NPT
/FR03	Flush port	Vent plug	1 x 1/4" NPT
/FR04	Flush port	Vent plug	2 x 1/4" NPT
/FR05	Flush port	Blind plugs	1 x 1/4" NPT
/FR06	Flush port	Blind plugs	2 x 1/4" NPT
/FV90	Pair flush valves BDTV910 - std		for 1/4" ports (fitted)
/FV91	Single flush valve BDTV910 - std		for 1/4" port (fitted)
11. Options			
/N5	EJX/EJA100/300/400 + W / N5 option Low volume covers by Yokogawa		
/FW	Full welded construction recommended for vacuum service		
/DM1	Extended Direct mount (80 mm)		(temp reduction <100°C)
/DM2	Extended Direct mount (150 mm)		(temp reduction <175°C)
/TR	Temperature reducer		(temp reduction <225°C)
/IC1	Capillary ID 1 mm. / 0,04"		
/BS6	Black sleeve on capillary ≤ 6 m.		
/BS15	Black sleeve on capillary > 6 ≤ 15 m.		
/K1	Degreasing Treatment I + certificate		
/K2	Degreasing Treatment II (applicable F2 fill) + certificate		
/NACE	NACE MR01-75 / ISO15156 standards (latest ed.) compliance		
/BAS	Basecal performance calculation report		per tag
/DP	Dye penetrant test pressurized welds + certificate		per tag

**Diaphragm Seal
PS Plug Seal, flush
diaphragm**



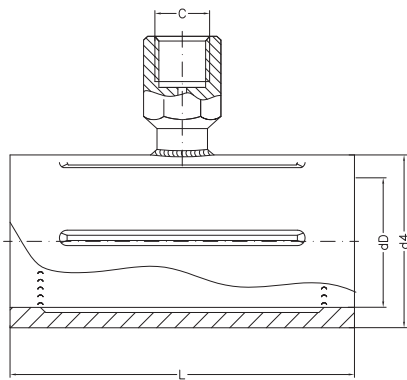
1. Model			
EJAD	EJA530 Series		(preferred connection "4" / WN
EJXD	EJX530 & 630 Series		(preferred connection "4" / WN
TXCD	EJA-E530 Series		(preferred connection "4" / WN
2. Seal type			
DFS-PS	Diaphragm Seal - Plug Seal		
3. Mounting			
XN5	EJAD / EJXD / TXCD no N5 / W available		
4. Thread & Form			
-T4NM	1"	NPT male	
-T5NM	1,5"	NPT male	
-T6NM	2"	NPT male	
-T4BM	1"	ISO 228 BSP male	
-T5BM	1,5"	ISO 228 BSP male	
-T6BM	2"	ISO 228 BSP male	
5. Body material			
SS	SS AISI 316(L)		
6. Diaphragm Material			
SS	Stainless Steel AISI 316 L		
HC	Hastelloy C276		
7. Fill Fluid			
-F3	BSO-22	Silicon Oil	-50/+200°C -58/+392°F
8. Capillary Size / Type (AISI 316 Stainless Steel Armoured)			
NN	Direct coupled / Welded (No Capillary)		
9. Capillary Length			
NN	Direct coupled / Welded (No Capillary)		

Diaphragm Seal SA Sanitary Seals



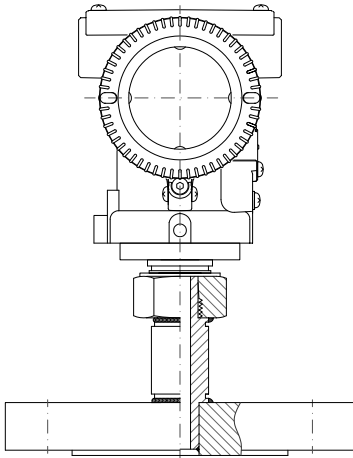
1. Model			
EJAM	EJA100, 300 & 400 Series		
EJXM	EJX100, 300 & 400 Series		
TXCM	EJA-E100, 300 & 400 Series		
EJAP	EJA130 & 440Series		
EJXP	EJX130 & 440Series		
TXCP	EJA-E130 & 440Series		
EJAD	EJA500 Series	(preferred connection "4" / WN)	
EJXD	EJX500 & 600 Series	(preferred connection "4" / WN)	
TXCD	EJA-E500 Series	(preferred connection "4" / WN)	
2. Seal type			
DFS-SA	Diaphragm Seal - Sanitary Seals		
3. Mounting			
WN5	EJAM with N5 / EJXM / TXCM with W option =/N5 mandatory option		
XN5	EJAD / EJXD / TXCD no N5 / W available		
4. Thread & Form			
-D3	DN25	female nut	acc. DIN 11851
-D5	DN40	female nut	acc. DIN 11851
-D6	DN50	female nut	acc. DIN 11851
-D8	DN80	female nut	acc. DIN 11851
-S5	1,5"	male thread	SMS 1145
-S6	2"	male thread	SMS 1145
-S8	3"	male thread	SMS 1145
-A5	1,5"	female nut	APV RTJ
-A6	2"	female nut	APV RTJ
-A8	3"	female nut	APV RTJ
-I5	1,5"	female nut	ISO 2853 IDF
-I6	2"	female nut	ISO 2853 IDF
-I8	3"	female nut	ISO 2853 IDF
-T5	1,5"	Tri-clamp	ISO 2852
-T6	2"	Tri-clamp	ISO 2852
-T8	3"	Tri-clamp	ISO 2852
5. Process connection			
SS	SS AISI 316(L)		
6. Diaphragm Material			
SS	Stainless Steel AISI 316 L		
7. Fill Fluid			
-F4	B50-40	FDA approved	-15/+225°C +5/+437°F
8. Capillary Size / Type (AISI 316 Stainless Steel Armoured)			
NN	Direct coupled / Welded (No Capillary)		
C1	Capillary (2mm ID)	axial	
9. Capillary Length			
NN	Direct coupled / Welded (No Capillary)		
01	1 m	3 ft	
1A	1,5 m	5 ft	
02	2 m	6 ft	
03	3 m	10 ft	
04	4 m	13 ft	
05	5 m	15 ft	
06	6 m	20 ft	
07	7 m	23 ft	
08	8 m	25 ft	
09	9 m	30 ft	
10	10 m	33 ft	
11	11 m	35 ft	
12	12 m	40 ft	
13	13 m	43 ft	
14	14 m	45 ft	
15	15 m	50 ft	
ZZ	User-defined, per m / ft		
10. Options			
/N5	EJX/EJA100/300/400 + W / N5 option Low volume covers by Yokogawa		
/FW	Full welded construction	recommended for vacuum service	
/DM1	Extended Direct mount (80 mm)	(temp reduction <100°C)	
/DM2	Extended Direct mount (150 mm)	(temp reduction <175°C)	
/IC1	Capillary ID 1 mm. / 0,04"		
/BS6	Black sleeve on capillary ≤ 6 m.		
/BS15	Black sleeve on capillary > 6 ≤ 15 m.		

Diaphragm Seal ILS Inline Seal sanitary



1. Model		
EJAD	EJA530 Series	(preferred connection "4" / WN)
EJXD	EJX530 & 630 Series	(preferred connection "4" / WN)
TXCD	EJA-E530 Series	(preferred connection "4" / WN)
2. Seal type		
DFS-ILS	Diaphragm Seal - Inline Sanitary	
3. Mounting		
WN5	EJAM with N5 / EJXM / TXCM with W option =/N5 mandatory option	
XN5	EJAD / EJXD / TXCD no N5 / W available	
4. Thread & Form		
-D3	Inline Sanitary Seal DIN 25 (11851)	
-D4	Inline Sanitary Seal DIN 32 (11851)	
-D5	Inline Sanitary Seal DIN 40 (11851)	
-D6	Inline Sanitary Seal DIN 50 (11851)	
-D7	Inline Sanitary Seal DIN 65 (11851)	
-D8	Inline Sanitary Seal DIN 80 (11851)	
-D10	Inline Sanitary Seal DIN 100 (11851)	
-A5	Inline Sanitary Seal 1-1/2" ISO 2852	
-A6	Inline Sanitary Seal 2" ISO 2852	
-A8	Inline Sanitary Seal 3" ISO 2852	
5. Process connection		
SS	SS AISI 316(L)	
6. Diaphragm Material		
SS	Stainless Steel AISI 316 L	
7. Fill Fluid		
-F4	BSO-40	FDA approved -15/+225°C +5/+437°F
8. Capillary Size / Type (AISI 316 Stainless Steel Armoured)		
NN	Direct coupled / Welded (No Capillary)	
C1	Capillary (2mm ID)	axial
9. Capillary Length		
NN	Direct coupled / Welded (No Capillary)	
01	1 m	3 ft
1A	1,5 m	5 ft
02	2 m	6 ft
03	3 m	10 ft
04	4 m	13 ft
05	5 m	15 ft
06	6 m	20 ft
07	7 m	23 ft
08	8 m	25 ft
09	9 m	30 ft
10	10 m	33 ft
11	11 m	35 ft
12	12 m	40 ft
13	13 m	43 ft
14	14 m	45 ft
15	15 m	50 ft
ZZ	User-defined, per m / ft	
10. Options		
/FW	Full welded construction	recommended for vacuum service
/DM1	Extended Direct mount (80 mm)	(temp reduction <100°C)
/DM2	Extended Direct mount (150 mm)	(temp reduction <175°C)
/IC1	Capillary ID 1 mm. / 0,04"	
/BS6	Black sleeve on capillary ≤ 6 m.	
/BS15	Black sleeve on capillary > 6 ≤ 15 m.	

Flanged Process Connection



1. Model			
EJAM	EJA100, 300 & 400 Series		
EJXM	EJX100, 300 & 400 Series		
TXCM	EJA-E100, 300 & 400 Series		
EJAP	EJA130 & 440Series		
EJXP	EJX130 & 440Series		
TXCP	EJA-E130 & 440Series		
EJAD	EJA500 Series		(preferred connection "4" / WN)
EJXD	EJX500 & 600 Series		(preferred connection "4" / WN)
TXCD	EJA-E500 Series		(preferred connection "4" / WN)
2. Type			
DFS-FPC	Flanged Process Connection		
3. Flange Size & Rating			
-A11	1"	cl. 150 RF	acc. ASME B16.5
-A13	1"	cl. 300 RF	acc. ASME B16.5
-A16	1"	cl. 600 RF	acc. ASME B16.5
-A21	2"	cl. 150 RF	acc. ASME B16.5
-A23	2"	cl. 300 RF	acc. ASME B16.5
-A26	2"	cl. 600 RF	acc. ASME B16.5
-A31	3"	cl. 150 RF	acc. ASME B16.5
-A33	3"	cl. 300 RF	acc. ASME B16.5
-A36	3"	cl. 600 RF	acc. ASME B16.5
-D25	DN25	PN10-40	form B1 acc. EN 1092-1
-D40	DN40	PN10-40	form B1 acc. EN 1092-1
-D50	DN50	PN10-40	form B1 acc. EN 1092-1
-D80	DN80	PN10-40	form B1 acc. EN 1092-1
4. Flange material			
SS	SS AISI 316(L)		
5. Mounting			
NN	Direct coupled / Welded (Distancer 50 mm)		
6. Options			
/DM1	Extended Direct mount (80 mm)		(temp reduction <100°C)
/FL	Filter (copper)		

DFS-DOC

Model	Suffix Codes	Description
DFS-DOC	-PMI	Positive Material Identification (external) / lot
	-RAC	Radioactivity < 1 mSv/a (internal) + certificate / lot
	-ITP	Inspection Test Plan / lot
	-2.1	2.1 Certificate - Declaration of Conformity of the order / lot
	-MDB	Manufacturing Data Book (per copy) / lot
	-CD	Project documentation (MDB) on CD / lot
	-IOM	IOM manual diaphragm seals / lot
	-PMS	Project manufacturing schedule (monthly) / lot
	-INS	1/2 day Inspection facilitated by Badotherm / lot
-DWG	Type IV GA drawing	

DFS-Q5

Model	Suffix Codes	Description	Accuracy
	EJAM	EJA100, 300 & 400 Series	0,065%
	EJXM	EJX100, 300 & 400 Series	0,040%
	TCXM	EJA-E100, 300 & 400 Series	0,055%
	EJAD	EJA500 Series	0,065%
	EJXD	EJX500 & 600 Series	0,040%
	TXCD	EJA-E500 Series	0,055%
DFS-Q5		5 Points Test Report Including Transmitter adjustment	

DFS-WN

1. Model	
DFS-WN	Welded process connector
2. Thread Size	
-T2	1/2" - M20 Thread
3. Thread Form	
NF	NPT Female Thread Form
NM	NPT Male Thread Form
BM	BSP Male Thread Form, G1/2" EN837
MM	Metric Male Thread Form, M20 x 1.5
4. Connector Material	
SS	Stainless Steel AISI-316 L
5. Direct Mount	
NN	Direct coupled / Welded DFS-WN pressure test+cert.

YOKOGAWA ELECTRIC CORPORATION

World Headquarters

9-32, Nakacho 2-chome, Musashino-shi
Tokyo 180-8750
Japan
www.yokogawa.com

YOKOGAWA CORPORATION OF AMERICA

2 Dart Road
Newnan GA 30265
USA
www.yokogawa.com/us

YOKOGAWA EUROPE B.V.

Euroweg 2
3825 HD Amersfoort
The Netherlands
www.yokogawa.com/eu

YOKOGAWA ELECTRIC ASIA Pte. LTD.

5 Bedok South Road
Singapore 469270
Singapore
www.yokogawa.com/sg

YOKOGAWA CHINA CO. LTD.

3F Tower D Cartelo Crocodile Building
No.568 West Tianshan Road Changing District
Shanghai, China
www.yokogawa.com/cn

YOKOGAWA MIDDLE EAST B.S.C.(c)

P.O. Box 10070, Manama
Building 577, Road 2516, Busaiten 225
Muharraq, Bahrain
www.yokogawa.com/bh

Yokogawa has an extensive sales and distribution network. Please refer to the European website (www.yokogawa.com/eu) to contact your nearest representative.



YOKOGAWA ◆